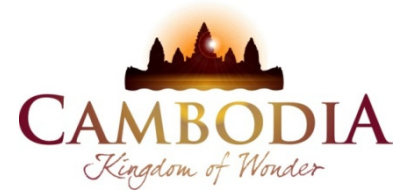




KINGDOM OF CAMBODIA
NATION RELIGION KING



TOURISM STATISTICS REPORT

Year 2018

MINISTRY OF TOURISM

Statistics and Tourism Information Department

No. A3, Street 169, Sangkat Veal Vong, Khan 7 Makara, Phnom Penh, Cambodia.

Fax: +855 23 885003

E-mail: kong@tourism.gov.kh

Web site: www.tourism.gov.kh

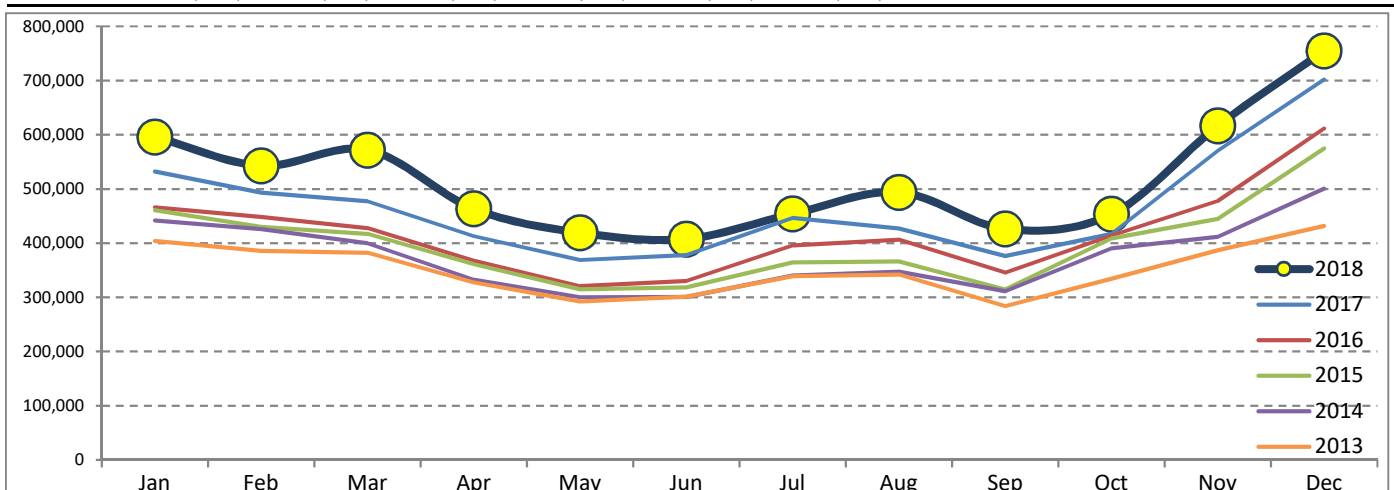
Tourism Highlights

Int'l Tourist Arrivals, Average Length of Stays, Hotel Occupancy & Int'l Tourism Receipts 1993 - 2018

Years	Int'l Tourist Arrivals		Average Length	Hotel Occupancy	Int'l Tourism Receipts
	Number	Change (%)	of Stays (Days)	(%)	(Million US\$)
1993	118,183	-	N/A	N/A	N/A
1994	176,617	49.4	N/A	N/A	N/A
1995	219,680	24.4	8.00	37.0	100
1996	260,489	18.6	7.50	40.0	118
1997	218,843	-16.0	6.40	30.0	103
1998	286,524	30.9	5.20	40.0	166
1999	367,743	28.3	5.50	44.0	190
2000	466,365	26.8	5.50	45.0	228
2001	604,919	29.7	5.50	48.0	304
2002	786,524	30.0	5.80	50.0	379
2003	701,014	-10.9	5.50	50.0	347
2004	1,055,202	50.5	6.30	52.0	578
2005	1,421,615	34.7	6.30	52.0	832
2006	1,700,041	19.6	6.50	54.8	1,049
2007	2,015,128	18.5	6.50	54.8	1,400
2008	2,125,465	5.5	6.65	62.7	1,595
2009	2,161,577	1.7	6.45	63.6	1,561
2010	2,508,289	16.0	6.45	65.7	1,786
2011	2,881,862	14.9	6.50	66.2	1,912
2012	3,584,307	24.4	6.30	68.5	2,210
2013	4,210,165	17.5	6.75	69.5	2,547
2014	4,502,775	7.0	6.50	67.6	2,736
2015	4,775,231	6.1	6.80	70.2	3,012
2016	5,011,712	5.0	6.30	68.9	3,212
2017	5,602,157	11.8	6.60	71.3	3,638
2018	6,201,077	10.7	7.00	72.2	4,375

International Tourist Arrivals to Cambodia

Months	2013	2014	2015	2016	2017	2018	Change (%)				
							14/13	15/13	16/15	17/16	18*/17
Q1	1,172,072	1,267,922	1,307,836	1,342,477	1,502,896	1,711,253	8.2	3.1	2.6	11.9	13.9
Jan	404,106	442,045	460,577	466,086	532,206	596,241	9.4	4.2	1.2	14.2	12.0
Feb	385,760	425,801	430,207	448,468	493,316	542,937	10.4	1.0	4.2	10.0	10.1
Mar	382,206	400,076	417,052	427,923	477,374	572,075	4.7	4.2	2.6	11.6	19.8
Q2	920,527	933,446	994,154	1,018,455	1,159,783	1,290,407	1.4	6.5	2.4	13.9	11.3
Apr	327,000	332,690	361,139	367,684	412,925	463,423	1.7	8.6	1.8	12.3	12.2
May	292,115	300,302	314,748	320,601	368,809	419,171	2.8	4.8	1.9	15.0	13.7
Jun	301,412	300,454	318,267	330,170	378,049	407,813	-0.3	5.9	3.7	14.5	7.9
Q3	964,612	998,690	1,044,880	1,147,483	1,250,082	1,374,373	3.5	4.6	9.8	8.9	9.9
Jul	338,761	340,091	364,325	395,761	446,627	454,056	0.4	7.1	8.6	12.9	1.7
Aug	342,064	347,211	366,096	406,214	427,224	494,043	1.5	5.4	11.0	5.2	15.6
Sep	283,787	311,388	314,459	345,508	376,231	426,274	9.7	1.0	9.9	8.9	13.3
Q4	1,152,954	1,302,717	1,428,361	1,503,297	1,689,396	1,825,044	13.0	9.6	5.2	12.4	8.0
Oct	334,410	390,637	408,922	414,077	417,039	453,370	16.8	4.7	1.3	0.7	8.7
Nov	386,737	411,501	444,640	477,686	570,471	616,549	6.4	8.1	7.4	19.4	8.1
Dec	431,807	500,579	574,799	611,534	701,886	755,125	15.9	14.8	6.4	14.8	7.6
Total	4,210,165	4,502,775	4,775,231	5,011,712	5,602,157	6,201,077	7.0	6.1	5.0	11.8	10.7



Source: Tourism Statistics Department, MOT

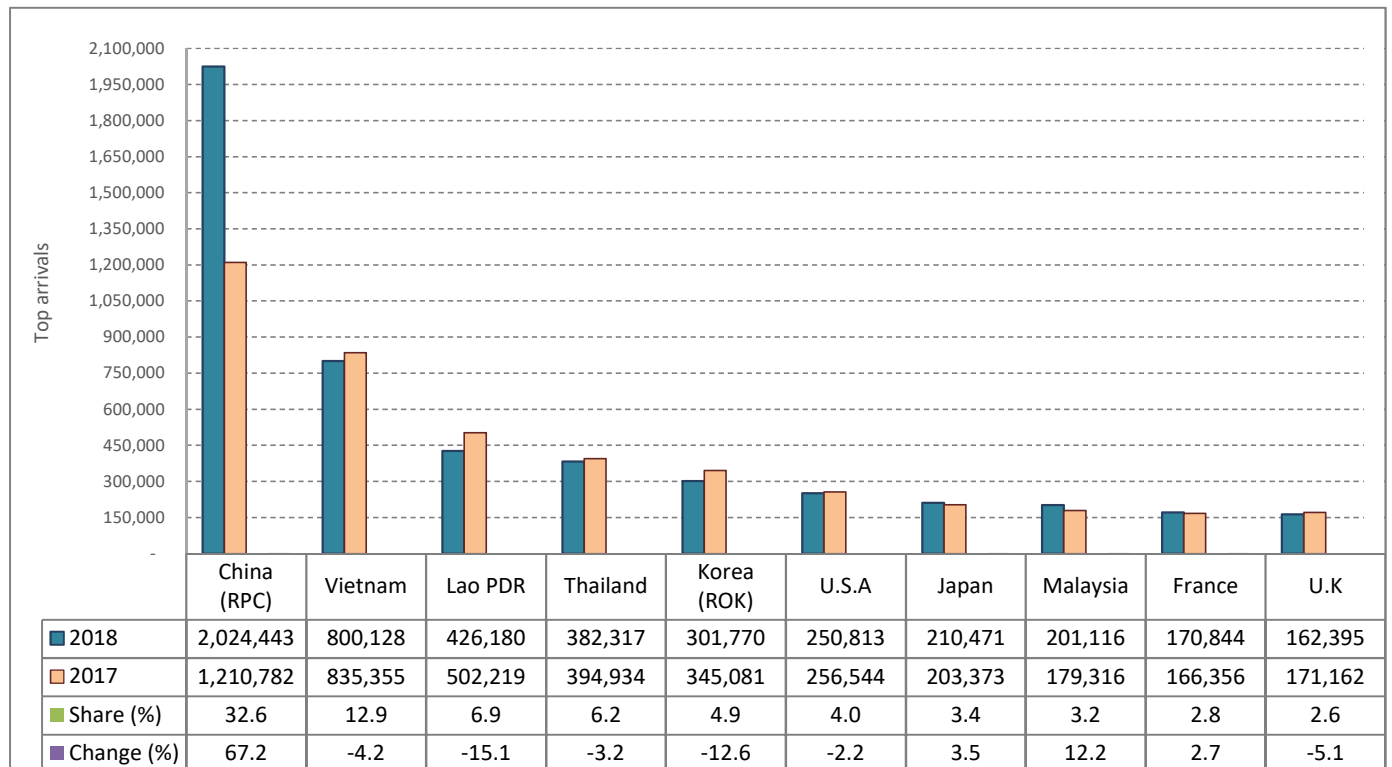
CAMBODIA: TOURISM STATISTICS REPORT IN 2018

I. INBOUND TOURISM

1. International tourist arrivals in January - December 2018

	Inbound tourism			Share (%) 2018*	Change (%)	
	2016	2017	2018		17/16	2018*/17
Air	2,704,367	3,312,738	4,096,870	66.1	22.5	23.7
Phnom Penh Int'l Airport (PNH)	1,164,240	1,409,833	1,923,773	31.0	21.1	36.5
Siem Reap Int'l Airport (REP)	1,507,039	1,820,687	1,939,550	31.3	20.8	6.5
Kong Keng (KOS)	33,088	82,218	233,547	3.8	148.5	184.1
Land and Waterways	2,307,345	2,289,419	2,104,207	33.9	-0.8	-8.1
Land	2,153,932	2,144,009	1,960,011	31.6	-0.5	-8.6
Waterways	153,413	145,410	144,196	2.3	-5.2	-0.8
Total	5,011,712	5,602,157	6,201,077	100.0	11.8	10.7

2. Top ten markets arrivals in January - December 2018



II. OUTBOUND TOURISM

Outbound tourism in January - December 2018

	Outbound tourism			Change (%)	
	2016	2017	2018	17/16	2018*/17
Cambodian Outbound Tourists	1,434,030	1,752,269	1,995,499	22.2	13.9
International Tourists Departure	4,473,314	5,059,010	5,659,839	13.1	11.9

III. INTERNAL TOURISM

Foreign visitor arrivals to the regions in January - December 2018

	Arrivals			Share (%) 2018*	Change (%)	
	2016	2017	2018		17/16	2018*/17
Phnom Penh & Surrounding	2,806,438	3,144,875	3,610,262	50.5	12.1	14.8
Siem Reap Angkor	2,205,274	2,457,282	2,590,815	36.2	11.4	5.4
Coastal Areas	643,289	739,884	877,236	12.3	15.0	18.6
Eco-tourism Areas	66,349	71,697	75,096	1.0	8.1	4.7
Total	5,721,350	6,413,738	7,153,409	100.0	12.1	11.5

International Tourist Arrivals to Cambodia by Country of Residence in January - December 2018

(by all means of transportation)

Regions Country of Residence	2017	2018			Total	Female	Share	Change
		Purposes of Visit					2018*	2018*/17
		Holiday	Business	Others			(%)	(%)
Grand Total	5,602,157	5,334,404	687,138	179,535	6,201,077	2,636,327	100.0	10.7
Asia and the Pacific	4,319,387	4,250,783	641,764	103,086	4,995,633	2,101,893	80.6	15.7
ASEAN (Southeast Asia)	2,161,254	1,893,489	120,313	53,702	2,067,504	886,094	33.3	-4.3
Brunei Darussalam	1,009	713	23	54	790	301	0.0	-21.7
Indonesia	49,878	37,022	16,246	2,485	55,753	14,955	0.9	11.8
Lao PDR	502,219	416,268	498	9,414	426,180	245,526	6.9	-15.1
Malaysia	179,316	180,566	15,344	5,206	201,116	60,803	3.2	12.2
Myanmar	18,981	18,122	3,261	1,135	22,518	8,734	0.4	18.6
Philippines	98,499	79,284	10,492	2,675	92,451	49,807	1.5	-6.1
Singapore	81,063	78,832	4,514	2,905	86,251	28,793	1.4	6.4
Thailand	394,934	343,217	24,005	15,095	382,317	127,644	6.2	-3.2
Vietnam	835,355	739,465	45,930	14,733	800,128	349,531	12.9	-4.2
Northeast Asia	1,894,912	2,151,088	506,326	27,494	2,684,908	1,124,923	43.3	41.7
China	1,210,782	1,576,894	438,352	9,197	2,024,443	875,139	32.6	67.2
Hong Kong (China)	13,461	11,576	441	204	12,221	4,939	0.2	-9.2
Japan	203,373	178,040	26,304	6,127	210,471	67,911	3.4	3.5
Korea (ROK)	345,081	275,009	18,456	8,305	301,770	122,834	4.9	-12.6
Macau (China)	539	543	31	66	640	148	0.0	18.7
Mongolia	653	645	34	47	726	350	0.0	11.2
Taiwan (China)	121,023	108,381	22,708	3,548	134,637	53,602	2.2	11.2
Southern Asia	70,550	72,920	7,391	1,309	81,620	22,569	1.3	15.7
Afghanistan	220	219	22	35	276	49	0.0	25.5
Bangladesh	2,227	2,583	469	154	3,206	432	0.1	44.0
Bhutan	204	96	17	61	174	89	0.0	-14.7
India	59,571	60,251	4,964	667	65,882	19,321	1.1	10.6
Iran	861	1,400	61	54	1,515	461	0.0	76.0
Nepal	2,823	2,543	431	128	3,102	899	0.1	9.9
Pakistan	2,019	2,909	544	114	3,567	508	0.1	76.7
Sri Lanka	2,625	2,919	883	96	3,898	810	0.1	48.5
Oceania	174,193	127,989	6,743	17,480	152,212	64,871	2.5	-12.6
Australia	143,852	107,859	5,778	13,793	127,430	54,051	2.1	-11.4
Fiji	393	157	60	45	262	81	0.0	-33.3
New Zealand	29,948	19,973	905	3,642	24,520	10,739	0.4	-18.1
Other Asia & the Pacific	18,478	5,297	991	3,101	9,389	3,436	0.2	-49.2
Europe	869,169	758,410	29,074	31,177	818,661	366,973	13.2	-5.8
Northern Europe	235,971	207,754	9,040	3,170	219,964	90,541	3.5	-6.8
Denmark	13,910	11,907	556	225	12,688	6,103	0.2	-8.8
Finland	7,465	6,917	254	204	7,375	3,230	0.1	-1.2
Iceland	938	706	21	34	761	256	0.0	-18.9
Ireland	12,829	11,500	519	123	12,142	5,476	0.2	-5.4
Norway	11,491	9,052	226	185	9,463	4,076	0.2	-17.6
Sweden	18,176	14,108	602	430	15,140	6,135	0.2	-16.7
United Kingdom	171,162	153,564	6,862	1,969	162,395	65,265	2.6	-5.1
Western Europe	375,037	312,234	13,628	23,607	349,469	153,055	5.6	-6.8
Austria	11,400	10,797	241	336	11,374	5,166	0.2	-0.2
Belgium	21,512	17,127	708	664	18,499	8,397	0.3	-14.0
France	166,356	143,071	8,389	19,384	170,844	73,798	2.8	2.7
Germany	118,265	95,033	2,236	1,707	98,976	43,196	1.6	-16.3
Luxembourg	1,079	618	33	39	690	316	0.0	-36.1
Monaco	92	54	15	24	93	33	0.0	1.1
Netherlands	32,457	27,191	1,217	503	28,911	13,093	0.5	-10.9
Switzerland	23,876	18,343	789	950	20,082	9,056	0.3	-15.9
Central / Eastern Europe	125,169	121,876	3,100	1,013	125,989	66,503	2.0	0.7
Bulgaria	2,754	2,718	53	46	2,817	1,413	0.0	2.3
Czech Republic	8,352	6,818	122	60	7,000	3,259	0.1	-16.2
Estonia	2,864	3,039	163	38	3,240	1,287	0.1	13.1
Hungary	5,882	5,324	96	40	5,460	2,591	0.1	-7.2
Kazakhstan	2,181	1,640	298	51	1,989	1,020	0.0	-8.8
Kyrgyzstan	230	235	34	24	293	128	0.0	27.4
Latvia	1,505	1,420	40	35	1,495	745	0.0	-0.7
Lithuania	2,779	2,092	102	56	2,250	1,149	0.0	-19.0
Poland	19,426	20,436	239	83	20,758	10,435	0.3	6.9
Romania	3,637	3,703	94	69	3,866	1,968	0.1	6.3
Russian Federation	65,275	63,134	1,302	290	64,726	36,584	1.0	-0.8
Slovakia	3,587	3,950	62	108	4,120	1,963	0.1	14.9
Ukraine	6,125	6,993	379	52	7,424	3,800	0.1	21.2
Uzbekistan	572	374	116	61	551	161	0.0	-3.7

Source: Tourism Statistics Department, MOT.

International Tourist Arrivals to Cambodia by Country of Residence in January - December 2018

(by all means of transportation)

Regions Country of Residence	2017		2018				Share	Change
	Purposes of Visit			Total	Female	2018*	2018*/17	
	Holiday	Business	Others			(%)	(%)	
Grand Total	5,602,157	5,334,404	687,138	179,535	6,201,077	2,636,327	100.0	10.7
Southern Europe	99,902	92,353	2,343	822	95,518	44,348	1.5	-4.4
Croatia	1,890	2,254	63	46	2,363	1,088	0.0	25.0
Greece	1,956	1,819	57	48	1,924	830	0.0	-1.6
Italy	40,329	32,372	1,267	340	33,979	14,846	0.5	-15.7
Malta	492	397	23	19	439	211	0.0	-10.8
Portugal	8,091	6,958	161	45	7,164	3,525	0.1	-11.5
Serbia	1,191	1,171	41	37	1,249	611	0.0	4.9
Slovenia	1,686	1,452	65	48	1,565	618	0.0	-7.2
Spain	44,267	45,930	666	239	46,835	22,619	0.8	5.8
East Mediterranean Europe	22,050	21,079	496	579	22,154	10,127	0.4	0.5
Israel	13,628	14,359	186	182	14,727	6,928	0.2	8.1
Turkey	8,422	6,720	310	397	7,427	3,199	0.1	-11.8
Other Europe	11,040	3,114	467	1,986	5,567	2,399	0.1	-49.6
Americas	395,029	310,368	14,635	44,316	369,319	161,236	6.0	-6.5
North America	335,252	265,261	12,922	42,886	321,069	137,408	5.2	-4.2
Canada	69,077	53,335	2,725	5,491	61,551	28,099	1.0	-10.9
Mexico	9,631	8,432	112	161	8,705	4,294	0.1	-9.6
United States of America	256,544	203,494	10,085	37,234	250,813	105,015	4.0	-2.2
Central America	1,393	1,713	160	72	1,945	790	0.0	39.6
Costa Rica	1,046	1,347	110	33	1,490	606	0.0	42.4
Honduras	174	141	27	19	187	63	0.0	7.5
Jamaica	173	225	23	20	268	121	0.0	54.9
South America	52,343	41,754	1,373	672	43,799	22,060	0.7	-16.3
Argentina	17,626	10,824	53	95	10,972	5,900	0.2	-37.8
Brazil	17,563	12,391	258	288	12,937	6,348	0.2	-26.3
Chile	6,708	7,103	662	73	7,838	3,471	0.1	16.8
Colombia	5,163	7,256	275	74	7,605	4,120	0.1	47.3
Ecuador	929	737	32	36	805	415	0.0	-13.3
Peru	1,794	1,858	36	45	1,939	943	0.0	8.1
Uruguay	1,816	1,282	29	36	1,347	691	0.0	-25.8
Venezuela	744	303	28	25	356	172	0.0	-52.2
Other America	6,041	1,640	180	686	2,506	978	0.0	-58.5
Africa	12,752	10,631	1,232	572	12,435	5,268	0.2	-2.5
North Africa	1,301	1,222	79	93	1,394	544	0.0	7.1
Morocco	846	798	33	37	868	391	0.0	2.6
Sudan	147	166	30	28	224	47	0.0	52.4
Tunisia	308	258	16	28	302	106	0.0	-1.9
Subsaharan Africa	9,686	9,051	1,097	381	10,529	4,542	0.2	8.7
Cameroon	178	193	34	31	258	60	0.0	44.9
Congo	90	261	24	20	305	95	0.0	238.9
Ghana	281	445	29	28	502	169	0.0	78.6
Kenya	403	385	45	55	485	251	0.0	20.3
Liberia	61	1,250	57	92	1,399	531	0.0	2193.4
Nigeria	1,206	177	314	44	535	118	0.0	-55.6
South Africa	6,956	6,006	542	51	6,599	3,118	0.1	-5.1
Tanzania	216	73	15	19	107	31	0.0	-50.5
Uganda	140	135	15	16	166	98	0.0	18.6
Zimbabwe	155	126	22	25	173	71	0.0	11.6
Other Africa	1,765	358	56	98	512	182	0.0	-71.0
Middle East	5,820	4,212	433	384	5,029	957	0.1	-13.6
Egypt	809	728	86	32	846	176	0.0	4.6
Iraq	289	488	54	35	577	76	0.0	99.7
Jordan	646	420	52	23	495	106	0.0	-23.4
Kuwait	519	403	31	38	472	73	0.0	-9.1
Oman	261	207	17	35	259	39	0.0	-0.8
Palestine	117	135	33	25	193	44	0.0	65.0
Qatar	100	78	18	21	117	18	0.0	17.0
Saudi Arabia	260	270	20	31	321	31	0.0	23.5
Syria	548	428	27	25	480	72	0.0	-12.4
United Arab Emirates	251	177	39	32	248	41	0.0	-1.2
Yemen	610	612	21	20	653	165	0.0	7.0
Other Middle East	1,410	266	35	67	368	116	0.0	-73.9