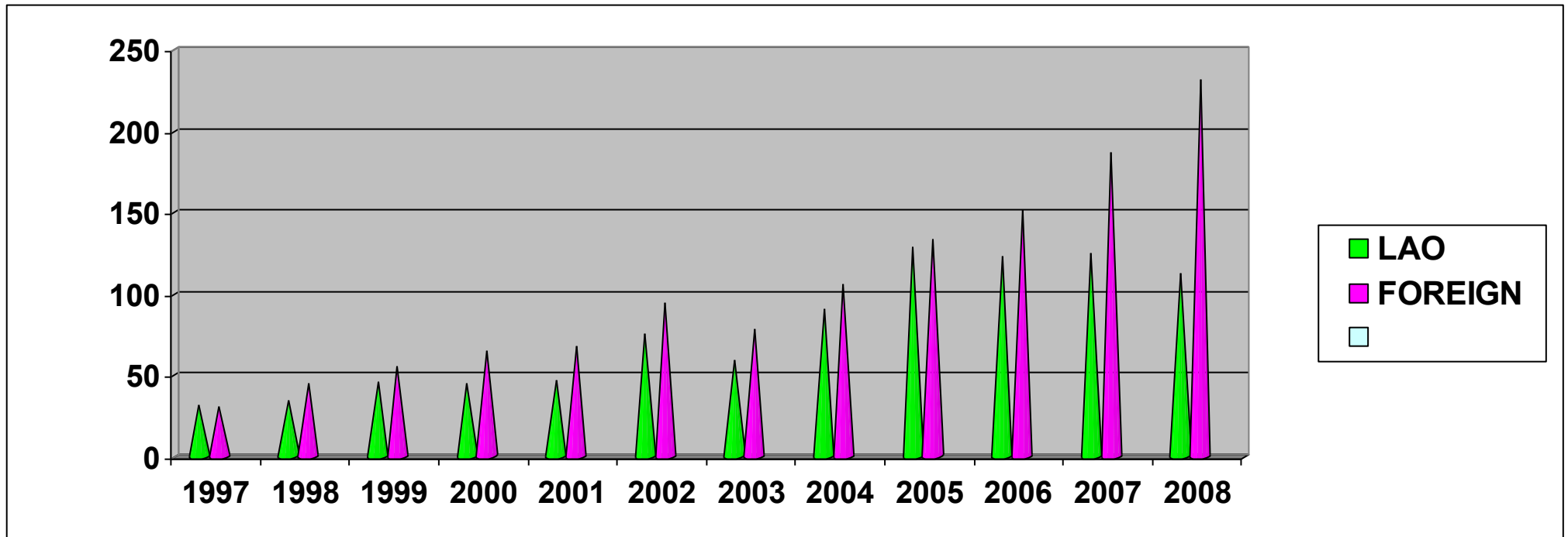


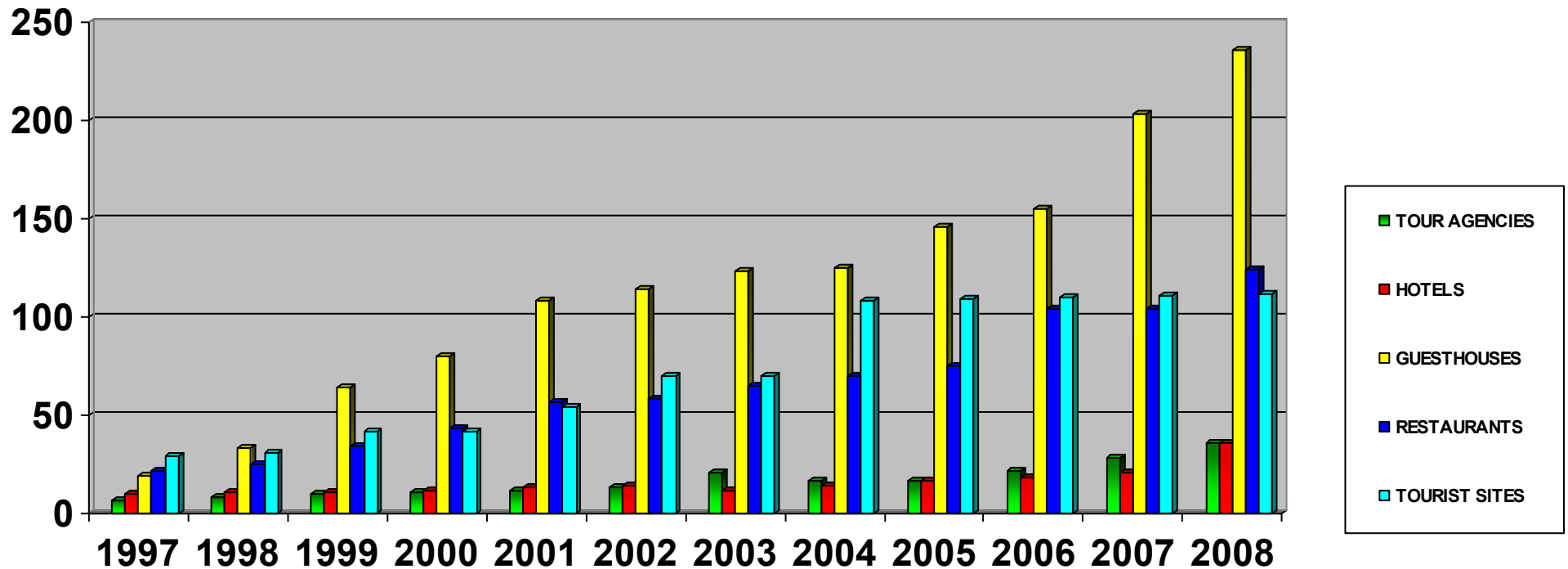
NUMBER OF TOURISTS ARRIVALS TO LUANG PRA BANG

ນັກທ່ອ ງທ່ຽວ	1997	1998	1999	2000	2001	2002	2003	2004	2005	2006	2007	2008
1 LAO	31.57 9	34.596	45.728	45.015	47.250	75.697	58.983	90.593	128.381	123.45 1	124.825	112.454
2 FOREI GN	30.76 9	44.583	55.307	65.225	68.250	94.846	78.129	105.51 3	133.569	151.70 3	186.819	231.575
TOTAL	62.34 8	79.179	101.03 5	110.24 0	115.50 0	170.54 3	137.12 2	196.10 6	261.950	275.15 4	311.645	344.029



**NUMBER OF TOUR AGENCIES, HOTELS, GUESTHOUSES
AND RESTAURANTS**

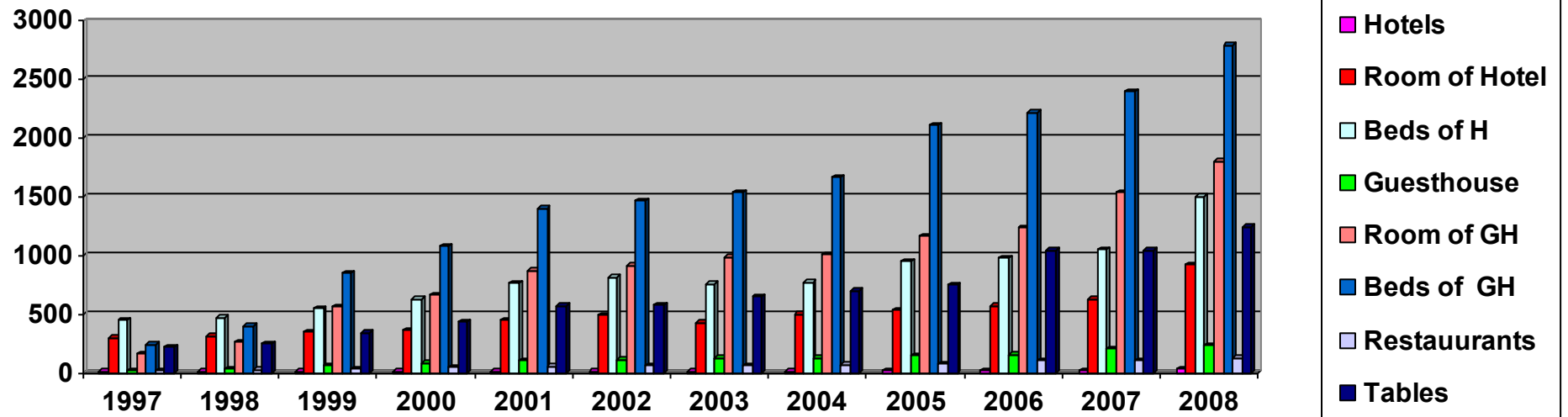
	1997	1998	1999	2000	2001	2002	2003	2004	2005	2006	2007	2008
TOUR AGENCIES (17+19)	7	8	10	11	12	13	21	17	17	22	28	36
HOTELS (29+7)	10	11	11	12	13	14	12	14	17	18	21	36
GUESTHOUSES(175+61)	19	33	64	80	108	114	123	125	146	155	203	236
RESTAURANTS(102+22)	22	25	34	43	57	58	65	70	75	104	104	124
TOURIST SITES	29	31	42	42	54	70	70	108	109	110	111	112



+ Tourist sites = 112 (Nature: 52, History: 9, Culture: 51)

Number of the room ,Hotels, Guesthouses 1997-2008

	1997	1998	1999	2000	2001	2002	2003	2004	2005	2006	2007	2008
Hotels	10	11	11	12	13	14	12	14	17	18	21	36
Room of Hotel	298	313	346	366	446	487	427	499	532	569	624	924
Beds of H	447	469	546	628	766	813	758	769	950	979	1.047	1.497
Guesthouse	19	33	64	80	108	114	123	125	146	155	203	236
Room of GH	159	264	564	661	870	915	987	1.003	1.167	1.243	1.538	1.802
Beds of GH	238	396	846	1.074	1.397	1.464	1.536	1665	2.109	2.025	2.392	2.788
Restaurants	22	25	34	43	57	58	65	70	75	104	104	124
Tables	220	250	340	430	570	580	650	700	750	1.040	1.040	1.240



Tourist Arrivals to Luang Prabang in 2008

N.	Country	Total
	Lao	112,454
1	Thailand	32,482
2	England UK	22,237
3	USA	21,859
4	France	20,602
5	Canada	17,928
6	Germany	16,763
7	Vietnam	14,151
8	Australia	13,176
9	China	9,990
10	Japan	9,555
11	Italy	7,134
12	Israel	5,762
13	Korea REP	5,344
14	New zealand	5,071
15	Belgium	3,066
16	Singapore	1,948
17	Denmark	1,804
18	Mexico	1,480
19	Ireland	1,394
20	Austria	1,267
21	Netherland	1,181
22	Finland	1,149
23	Switzerland	1,147
24	Russia	1,130
25	Sweden	876
26	Korea DEM	850
27	Spain	682
28	Argentina	619
29	Norway	588
30	India	523
31	Malaysia	520
32	Philippines	514
33	Pakistan	467

N.	Country	Total
34	Brazil	431
35	Chile	390
36	A rmania	368
37	Nepal	358
38	Cambodia	323
39	Ice land	321
40	Uzbekistan	316
41	Sri lanka	263
42	Iran	261
43	Taiwan	234
44	South Africa	227
45	Myanmar	222
46	Jordan	214
47	Belarus	211
48	Turkey	208
49	Czecho	198
50	Bugary	196
51	Bangladesh	192
52	Hong kong	188
53	Fiji	185
54	Kazakstan	182
55	Saudiarabia	180
56	Yemen	176
57	Portugal	176
58	Indonesia	171
59	Brunei	163
60	Greece	160
61	Colombia	160
62	Slovenia	158
63	Iraq	156
64	Poland	151
65	Venezuela	128
66	Estonia	125

N.	Country	Total
67	Haiti	125
68	Cuba	122
69	Hungary	114
70	Palistine	108
71	Ghana	106
72	Croatia	99
73	Buthan	96
74	Rusvia	64
75	Kuwait	46
76	Bahrain	44
77	Egypte	4
Total:		344,029

Hotels

- | | | | |
|--------------------------------|---|----------------------------------|--|
| 1 Manoluck | Pongkham village
Phouvao road
Tel: (856-071) 212 250
Fax: (856-071) 212 508 | 2 Souvannaphum | Thatluang village
Phothisarath road
Tel: (856-071) 212 200
Fax: (856-071) 212 577 |
| 3 La Residence Phouvao | Naviengkham village
Phouvao road
Tel: (856-071) 212 194
Fax: (856-071) 212 534 | 4 Phousy | Thongchaluen village
Setthathirath road
Tel: (856-071) 212 192
Fax: (856-071) 212 719 |
| 5 Rama | Visoun village
Visounnarath road
Tel: (856-071) 212 247
Fax: (856-071) 253 266 | 6 santi | Vatsene village
Sisavangvong road
Tel: (856-071) 212 267
Fax: (856-071) 252 158 |
| 7 Sanakeo | Pongkham village
Phouvao road
Tel: (856-071) 252 992
Fax: (856-071) 253 050 | 8 The Grand Luang Prabang | xiengkeo village
to kuangsy road
tel: (856-071) 253 8517
fax: (856-071) 253 0278 |
| 9 Naviengkham | Naviengkham village
Naviengkham road
Tel: (856-071) 212 439
Fax: (856-071) 212 739 | 10 Santi Resort | naduan village
to xiengmouk road
tel: (856-071) 212 267
fax: (856-071) 252 158 |
| 11 Ancient luangprabang | Pakham village
Sisavangvong road
Tel: (856-071) 212 264
Fax: (856-071) 212 804 | 12 Hay soke | phabattai village
phouvao road
tel: (856-071) 212 278
fax: (856-071) 254 499 |
| 13 Parasol blanc | thatluang village
phouvao road
tel: (856-071) 252 124 | 14 Meuang Luang | Mano village
road
tel: (856-071) 212 791 |

15 Upsara

Vat sene village
 Khemkhan road
 Tel: (856-071) 212 420
 Fax: (856-071) 254 252

17 Xienglom Resort

Xienglom village
 South 13 road
 Tel: 0305140111

19 Namkhan Resort

No 13 N Road
 Fax:
 Tel :030 777 1305

21 Vang Thong

Nong Kham Village
 Fax : (856-071)260 300
 Tel : (856-071)260 301

23 Mekong River view

SiengTong Village
 Fax : (856-071) 254890
 Tel : (856-071) 254910

25 Lotus

VathNong Village
 Fax : (856-071) 255050
 Tel : (856-071) 255050

27 Nong Kaiw

Fax : (856-071) 600602
 Tel : (856-071) 600004

29 Vangsavath

Nongkam Village
 Fax : (856-071) 212889

16 3 Naga

Vat sene village
 Sisavangvong road
 tel: (856-071) 252 079
 fax: (856-071) 253 999

18 Mai deu

Meunna Village
 Old bridge Road
 Fax : (856-071) 254 605
 Tel : (856-071) 254 605

20 Xieng Mouk Resort

Fax : (856-071) 252 587
 Tel : (856 030) 5140 990

22 Ban Lao

Marno Village
 Tel:(85620) 212438
 -Fax: (85620) 252 078

24 Ramayana

Parkam Village
 Tel:(85620)260601
 -Fax: (85620) 255055

26 Xieng Lom

Xieng Lom Village
 Fax : (856-071)
 Tel : (856-030)5140111

28 The Chang Heritage

KeeLee Village
 Fax : (856-071) 253553
 Tel : (856-071) 253553

30 PhaNom

PhaNom Village
 Fax : (856-071) 260995

Tel : (856-071) 212889

Tel : (856-071) 260885

31 Vangngern

PhaNom Village
Fax : (856-071)
Tel : (856-071)

32 D Lyon

ViengMay Village
Fax : (856-071) 260690
Tel : (856-071) 260602

**33 Darapheth
My Lao home**

Ho Xieng Village
Fax : (856-071) 254881
Tel : (856-071) 254881

34 MuangTong

TathLuang Village
Fax : (856-071) 284003
Tel : (856-071) 254302

35 Dao Neua

Nasamphan Village
Fax : (856-071)
Tel : (856-071)

36 LJ B Smooth

Xieng Thong Village
Fax : (856-071)
Tel : (856-071)

Tour agencies

**1 Luang Prabang
(Head)**

www.luangprabang-travel-tour.com
Visoun village
Setthathirath road
Tel: (856-071) 212 198
Fax: (856-071) 212 728

**2 ASEV
(Head)**

Pakham village
Pouvannabanlang Road
Tel: (856-071) 253 340
Fax: (856-071) 253 107

**3 Sakuna
(Head)**

Vatsene village
Sakkaline road
Tel: (856-071) 253 057
Fax: (856-071) 253 057

**4 Settha
(Head)**

www.setthatours.com
Nongkham Village
Tel: (856-071) 253 194
Fax: (856-071) 253 194

**5 All Lao service
(Head)**

www.alllaoservice.com
Xieng Mouane Village
Sakkaline road
Tel: (856-071) 253 522
Fax: (856-071) 253 522

**6 P T M
(Head)**

www.laosptmtravel.com
Xiengmouane Village
Sakaran Road
Tel: (856-071) 254 756
Fax: (856-071) 254 756

**7 Asia review
(Head)**

www.asia-revealtour.com
Phonpheng
Fax : (856-071)

**8 Tiger Trail
(Head)**

www.laos-adventures.com
Vatthat Village
Fax: (856-071) 252 655

**9 Treasure
(Head)**

www.treasuretravellaos.com
Xiengmouane Village

**10 North & Northern
(Head)**

www.northerntravellaos.com
Vieng xay Village
Tel: (856-071)260 567

Fax: (856-071)254 682

11 Lao Discovery

(Head)

Xiengmouane Village
Tel: (856-071)253 745
Fax: (856-071) 253 745

13 Mekong Sun

(Head)

www.cruisemekong.com

Xiengthong Village
Tel: (856-020)5510 957
Fax : (856-071)

15 Naga

(Head)

www.nagaexpress.com
Pakham Village
Tel: (856-071)254 735
Fax : (856-071)254 735

17 Vatthana

(Head)

Viengxai Village
Setthathirath Road
Tel: (856-071) 252 661
Fax: (856-071) 252 661

18 Daenniyom

(Branch)

Watsene
Tel: (856-020) 260 348
Fax : (856-071) 260 348

20 Happy Smile

(Branch)

www.happylaos.com
Vat Nong Village
Tel: (856-020)254 821
Fax : (856-071)254 821

22 Diethelm

(Branch)

www.diethelmtravel.com
Khily village
Sisavangvong Road
tel: (856-071) 212 277

12 Trail of Indo China

(Head)

Mouanena Village
Tel: (856-071)260 456
Fax : (856-071)260 456

14 Xieng Thong

(Head)

Dara Market
Tel: (856-020)
Fax : (856-071)

16 Manifa

(Head)

Choumkhong Village
Sakaline Road
Tel: (856-071) 254 179
Fax: (856-071) 254 179

19 Champa Lao

(Branch)

Chumkhong village
Ounkham Road
Tel: (856-071) 212 419
Fax: (856-071) 212 419

21 Khaen Lao

(Branch)

Hoaxieng Village
Tel: (856-071) 253 314
Fax: (856-071) 253 314

23 Phone Travel

(Branch)

www.laokim.com
Choumkhong Village
Tel: (856-020) 5974 983

24	Inter Lao (Branch)	www.interlao.com Aham village Dara Market road Tel: (856-071) 212 034 Fax: (856-071) 253 065	25	Moung Lao (Branch)	Vat sene Village Tel: (856-020) 5671 523 Fax : (856-071)
26	Lane xang (Branch)	www.lanexang-travel.com Visoun village Visounnarath Road Tel: (856-071) 212 793	27	Mekong Lao (Branch)	Phan Luang Village Tel: (856-020) Fax : (856-071)
28	Khily (Branch)	Visoun village Visounnarath road Tel: (856-071) 252 587 Fax: (856-071) 350 160	29	A T Lao (Branch)	Vat That Village Tel: (856-020)252 764 Fax : (856-071)252 763
30	Lao youth (Branch)	www.laosyouthtravel.com Pakham village Sisavangvong road Tel: (856-071) 253 340 Fax: (856-071) 253 340	31	Sarika (Branch)	Viengxai Village Tel: (856-020) Fax : (856-071)
32	Viengchampa (Branch)	www.viengchampatour.com Phone Heuang village Kingkitsarath road Tel: (856-071) 252 400 Fax: (856-071) 252 725	33	Savanakhet (Branch)	Nongkham village Kuangsi Road Tel: (856-071) 260 166 Fax: (856-071) 260 166
34	Green Discovery (Branch)	www.greendiscoverylaos.com Xiengmouane Village Sakarín Road Tel: (856-071)212 093 Fax: (856-071)212 093	35	Savanbanhao (Branch)	www.savanbanhaoh-travel.com Vatsene Village Sakkaline Road Tel: (856-071) 252 386 Fax: (856-071) 252 386
36	Lao Service Tour (Branch)	www.laostravelservice.com Vatsen village Sakarín Road Tel: (856-071)212 252 Fax: (856-071)212 725			