

Ecotourism in Myanmar's Protected Areas

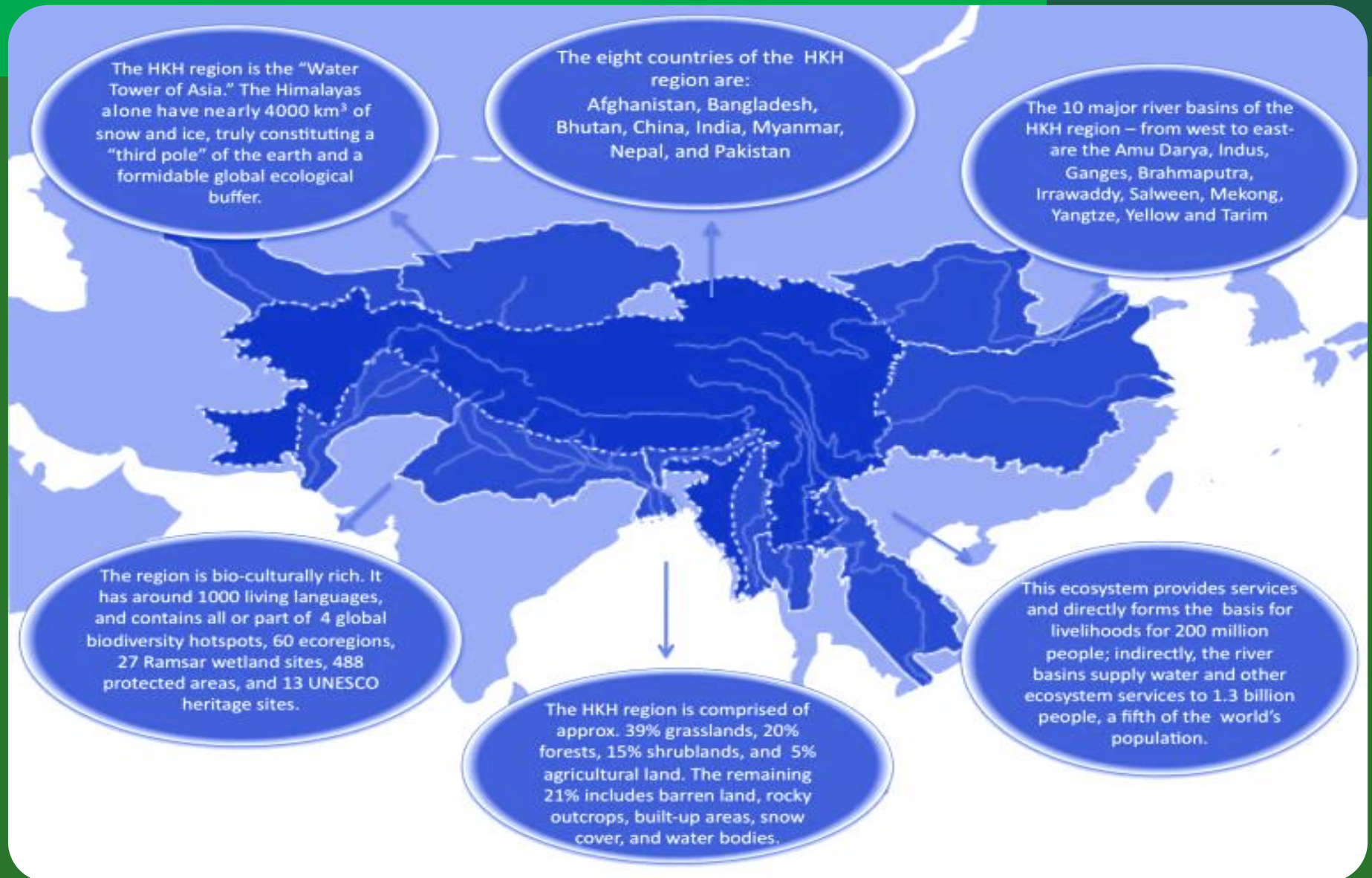
Developing a Policy and Management Strategy

Marjorie van Strien – Tourism Specialist

International Centre for Integrated Mountain Development

Kathmandu, Nepal

Hindu Kush Himalaya (HKH)



International Centre for Integrated Mountain Development (ICIMOD)

ICIMOD

FOR MOUNTAINS AND PEOPLE

Intergovernmental learning & knowledge centre, serving 8 member countries of the HKH region

Mission: To enable sustainable and resilient mountain development for improved and equitable livelihoods through knowledge and regional cooperation

- General focus on mountain and hill areas
- Upstream-downstream linkages
- Transboundary linkages
- Adaptation to change

Myanmar member since 1990
MOECAAF nodal Ministry



Areas of engagement

- Research and pilots
- Policy development and adaptation
- Regional learning & sharing
- Collaboration with regional, national and local partners

Ecosystems, water & air, geospatial solutions, sustainable livelihoods, knowledge sharing & communication



ICIMOD and Tourism

ICIMOD

FOR MOUNTAINS AND PEOPLE

- Gives value to natural resources outside the traditional consumptive use.
- Strengthen conservation goals.
- Economic justification for heritage protection and community partnerships.
- Can transform mountain specificities into economic assets & opportunities.
- A tool in strengthening adaptation to change by offering additional (or alternative) livelihood opportunities.

→ **Need for a holistic approach and structured planning**



“Rural Livelihoods and Climate Change Adaptation in the Himalayas” (Himalica)

In Myanmar:

- Destination Management Plan for the Inlay Region (including the hill areas) with MOHT and MIID
 - official launch 29 October
- Pilot with MOECAAF: strengthening the resilience to change of local livelihoods in the west bank of Inlay
- Technically support **Ecotourism Policy and Management Strategy** formulation with MOHT and MOECAAF

Other projects, e.g. Brahmaputra-Salween Landscape Initiative with MOECAAF



Regional learning & sharing

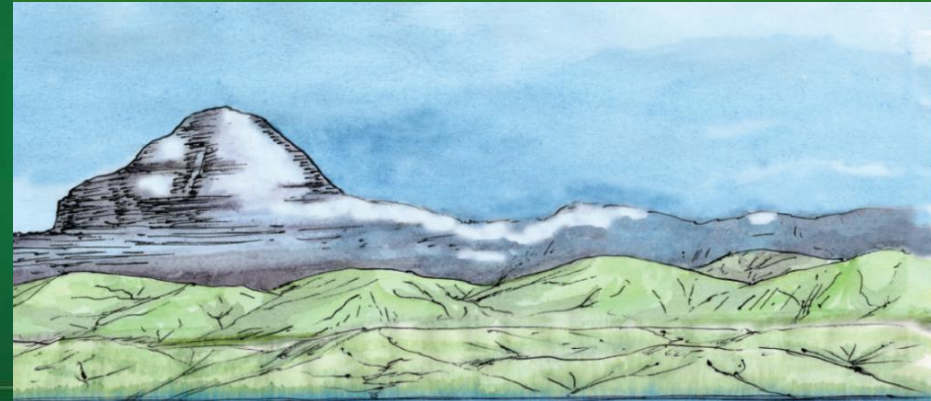
ICIMOD

FOR MOUNTAINS AND PEOPLE

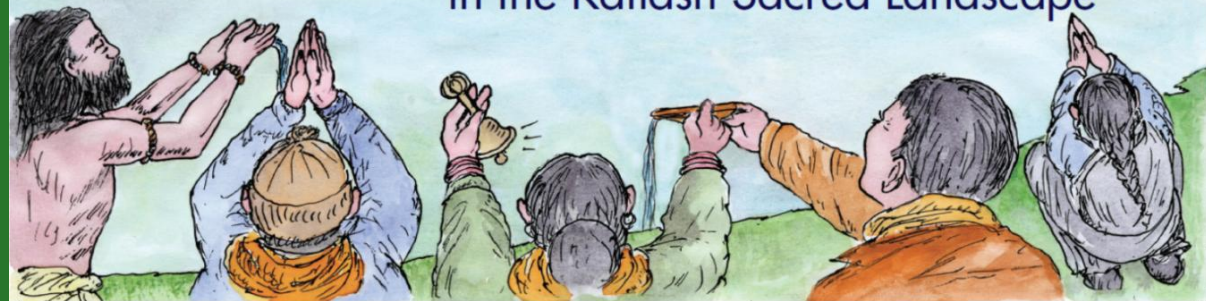
DOs&DON'Ts FOR TOURISTS



HOW YOU CAN VISIT MYANMAR RESPONSIBLY



Guidelines for Travelling Responsibly in the Kailash Sacred Landscape



Ecotourism in Myanmar's PAs

- Collaboration required with various Ministries - alignment
- MOECAAF and MOHT lead focal Ministries
- MOU signing with MOHT on 30 October
- Build synergy with other Ministries through Ecotourism Task Force
- Align valuable experiences of park warden, private sector, NGO's, etc.



Thank you

ICIMOD

FOR MOUNTAINS AND PEOPLE

www.icimod.org

