



KINGDOM OF CAMBODIA  
NATION RELIGION KING



# TOURISM STATISTICS REPORT

# Year 2019

**MINISTRY OF TOURISM**  
NATIONAL INSTITUTE OF TOURISM  
TOURISM STATISTICS DEPARTMENT  
No. A3, Street 169, Sangkat Veal Vong, Khan 7 Makara, Phnom Penh, Cambodia.  
Fax: +855 23 885003  
E-mail: [kong@tourism.gov.kh](mailto:kong@tourism.gov.kh)  
Website: [www.tourism.gov.kh](http://www.tourism.gov.kh)

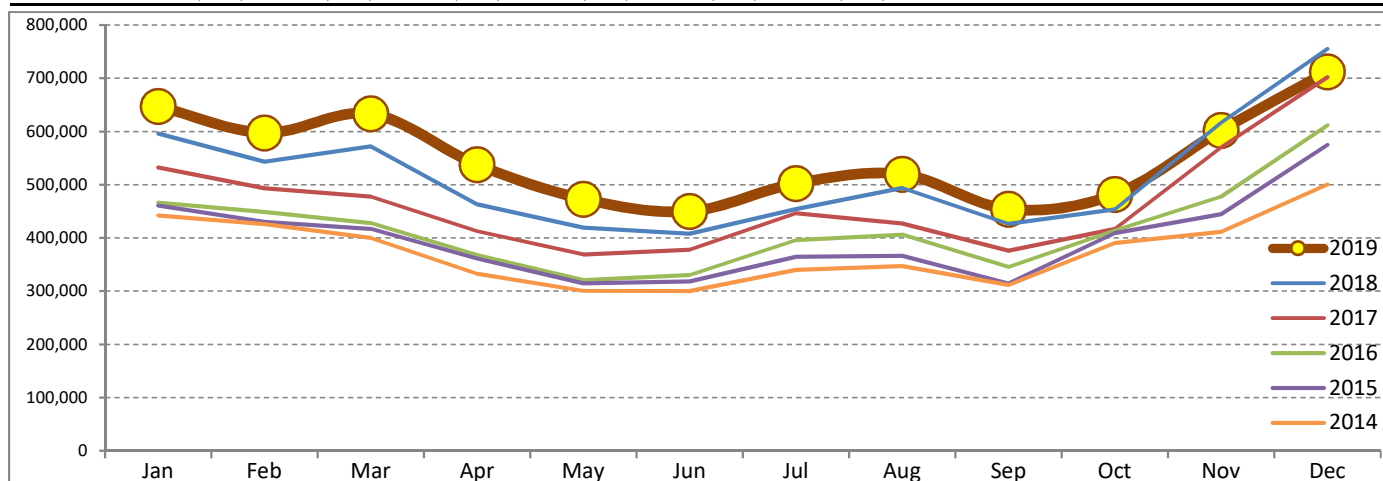
# Tourism Highlights

## Int'l Tourist Arrivals, Average Length of Stays, Hotel Occupancy & Int'l Tourism Receipts 1993 - 2018

Years	Int'l Tourist Arrivals		Average Length of Stays (Days)	Hotel Occupancy (%)	Int'l Tourism Receipts (Million US\$)
	Number	Change (%)			
1993	118,183	-	N/A	N/A	N/A
1994	176,617	49.4	N/A	N/A	N/A
1995	219,680	24.4	8.00	37.0	100
1996	260,489	18.6	7.50	40.0	118
1997	218,843	-16.0	6.40	30.0	103
1998	286,524	30.9	5.20	40.0	166
1999	367,743	28.3	5.50	44.0	190
2000	466,365	26.8	5.50	45.0	228
2001	604,919	29.7	5.50	48.0	304
2002	786,524	30.0	5.80	50.0	379
2003	701,014	-10.9	5.50	50.0	347
2004	1,055,202	50.5	6.30	52.0	578
2005	1,421,615	34.7	6.30	52.0	832
2006	1,700,041	19.6	6.50	54.8	1,049
2007	2,015,128	18.5	6.50	54.8	1,400
2008	2,125,465	5.5	6.65	62.7	1,595
2009	2,161,577	1.7	6.45	63.6	1,561
2010	2,508,289	16.0	6.45	65.7	1,786
2011	2,881,862	14.9	6.50	66.2	1,912
2012	3,584,307	24.4	6.30	68.5	2,210
2013	4,210,165	17.5	6.75	69.5	2,547
2014	4,502,775	7.0	6.50	67.6	2,736
2015	4,775,231	6.1	6.80	70.2	3,012
2016	5,011,712	5.0	6.30	68.9	3,212
2017	5,602,157	11.8	6.60	71.3	3,638
2018	6,201,077	10.7	7.00	72.2	4,375

### International Tourist Arrivals to Cambodia

Months	2014	2015	2016	2017	2018	2019	Change (%)				
							15/14	16/15	17/16	18/17	2019*/18
<b>Q1</b>	<b>1,267,922</b>	<b>1,307,836</b>	<b>1,342,477</b>	<b>1,502,896</b>	<b>1,711,253</b>	<b>1,877,853</b>	<b>3.1</b>	<b>2.6</b>	<b>11.9</b>	<b>13.9</b>	<b>9.7</b>
Jan	442,045	460,577	466,086	532,206	596,241	647,206	4.2	1.2	14.2	12.0	8.5
Feb	425,801	430,207	448,468	493,316	542,937	597,483	1.0	4.2	10.0	10.1	10.0
Mar	400,076	417,052	427,923	477,374	572,075	633,164	4.2	2.6	11.6	19.8	10.7
<b>Q2</b>	<b>933,446</b>	<b>994,154</b>	<b>1,018,455</b>	<b>1,159,783</b>	<b>1,290,407</b>	<b>1,460,621</b>	<b>6.5</b>	<b>2.4</b>	<b>13.9</b>	<b>11.3</b>	<b>13.2</b>
Apr	332,690	361,139	367,684	412,925	463,423	537,656	8.6	1.8	12.3	12.2	16.0
May	300,302	314,748	320,601	368,809	419,171	472,952	4.8	1.9	15.0	13.7	12.8
Jun	300,454	318,267	330,170	378,049	407,813	450,013	5.9	3.7	14.5	7.9	10.3
<b>Q3</b>	<b>998,690</b>	<b>1,044,880</b>	<b>1,147,483</b>	<b>1,250,082</b>	<b>1,374,373</b>	<b>1,475,832</b>	<b>4.6</b>	<b>9.8</b>	<b>8.9</b>	<b>9.9</b>	<b>7.4</b>
Jul	340,091	364,325	395,761	446,627	454,056	502,421	7.1	8.6	12.9	1.7	10.7
Aug	347,211	366,096	406,214	427,224	494,043	519,502	5.4	11.0	5.2	15.6	5.2
Sep	311,388	314,459	345,508	376,231	426,274	453,909	1.0	9.9	8.9	13.3	6.5
<b>Q4</b>	<b>1,302,717</b>	<b>1,428,361</b>	<b>1,503,297</b>	<b>1,689,396</b>	<b>1,825,044</b>	<b>1,796,286</b>	<b>9.6</b>	<b>5.2</b>	<b>12.4</b>	<b>8.0</b>	<b>-1.6</b>
Oct	390,637	408,922	414,077	417,039	453,370	481,782	4.7	1.3	0.7	8.7	6.3
Nov	411,501	444,640	477,686	570,471	616,549	602,042	8.1	7.4	19.4	8.1	-2.4
Dec	500,579	574,799	611,534	701,886	755,125	712,462	14.8	6.4	14.8	7.6	-5.6
<b>Total</b>	<b>4,502,775</b>	<b>4,775,231</b>	<b>5,011,712</b>	<b>5,602,157</b>	<b>6,201,077</b>	<b>6,610,592</b>	<b>6.1</b>	<b>5.0</b>	<b>11.8</b>	<b>10.7</b>	<b>6.6</b>



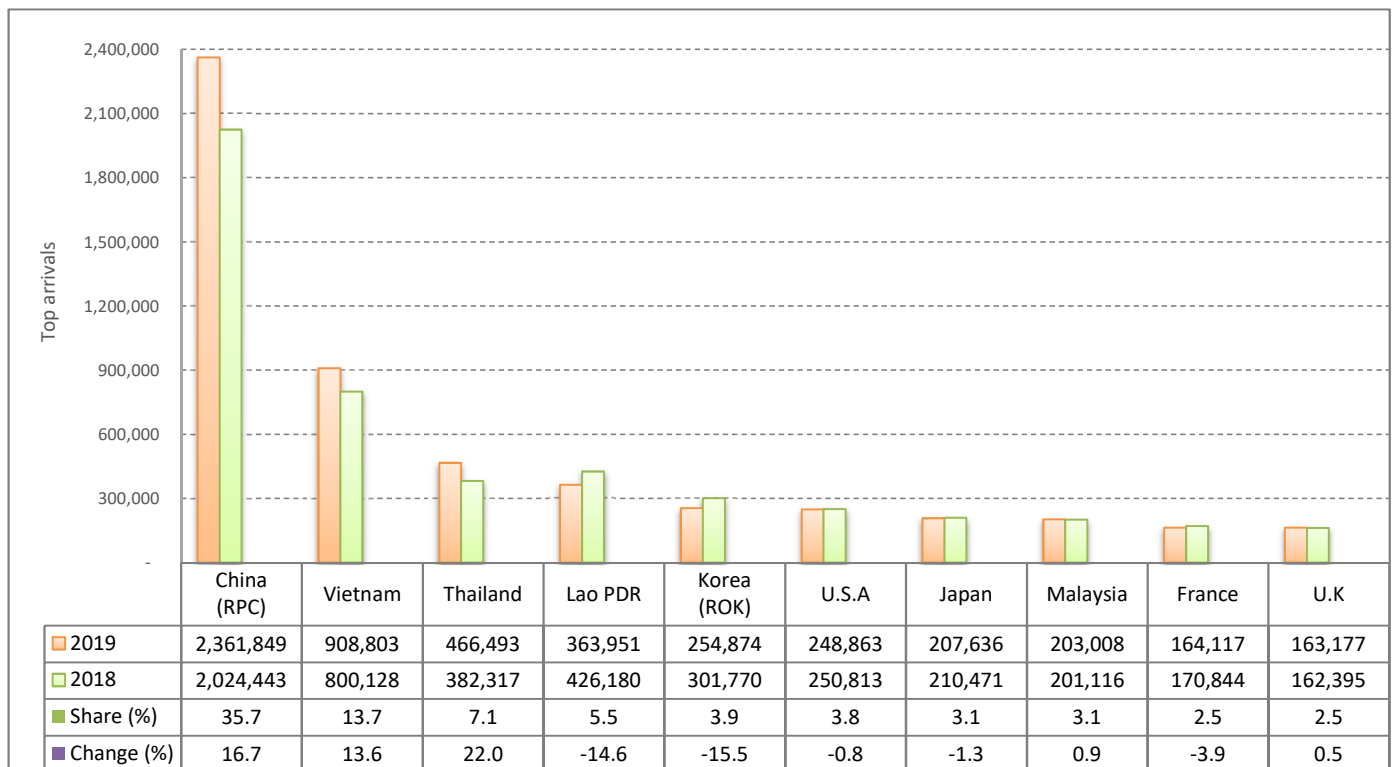
# CAMBODIA: TOURISM STATISTICS REPORT IN 2019

## I. INBOUND TOURISM

### 1. International tourist arrivals in January - December 2019

	Inbound tourism			Share (%) 2019*	Change (%)	
	2017	2018	2019		18/17	2019*/18
<b>Air</b>	<b>3,312,738</b>	<b>4,096,870</b>	<b>4,403,995</b>	<b>66.6</b>	<b>23.7</b>	<b>7.5</b>
Phnom Penh Int'l Airport (PNH)	1,409,833	1,923,773	2,071,907	31.3	36.5	7.7
Siem Reap Int'l Airport (REP)	1,820,687	1,939,550	1,665,365	25.2	6.5	-14.1
Kong Keng (KOS)	82,218	233,547	666,723	10.1	184.1	185.5
<b>Land and Waterways</b>	<b>2,289,419</b>	<b>2,104,207</b>	<b>2,206,597</b>	<b>33.4</b>	<b>-8.1</b>	<b>4.9</b>
Land	2,144,009	1,960,011	2,049,748	31.0	-8.6	4.6
Waterways	145,410	144,196	156,849	2.4	-0.8	8.8
<b>Total</b>	<b>5,602,157</b>	<b>6,201,077</b>	<b>6,610,592</b>	<b>100.0</b>	<b>10.7</b>	<b>6.6</b>

### 2. Top ten markets arrivals in January - December 2019



## II. OUTBOUND TOURISM

### Outbound tourism in January - December 2019

	Outbound tourism			Change (%)	
	2017	2018	2019	18/17	2019*/18
Cambodian Outbound Tourists	1,752,269	1,995,499	2,038,284	13.9	2.1
International Tourists Departure	5,059,010	5,659,839	6,222,834	11.9	9.9

## III. INTERNAL TOURISM

### Foreign visitor arrivals to the regions in January - December 2019

	Arrivals			Share (%) 2019*	Change (%)	
	2017	2018	2019		18/17	2019*/18
Phnom Penh & Surrounding	3,144,875	3,610,262	4,404,895	55.8	14.8	22.0
Siem Reap Angkor	2,457,282	2,590,815	2,205,697	27.9	5.4	-14.9
Coastal Areas	739,884	877,236	1,204,374	15.3	18.6	37.3
Eco-tourism Areas	71,697	75,096	81,588	1.0	4.7	8.6
<b>Total</b>	<b>6,413,738</b>	<b>7,153,409</b>	<b>7,896,554</b>	<b>100.0</b>	<b>11.5</b>	<b>10.4</b>

## International Tourist Arrivals to Cambodia by Country of Residence in January - December 2019

(by all means of transportation)

Regions Country of Residence	2018	2019			Total	Female	Share	Change
		Purposes of Visit					2019*	2019*/18
		Holiday	Business	Others			(%)	(%)
<b>Grand Total</b>	<b>6,201,077</b>	<b>5,034,903</b>	<b>1,371,363</b>	<b>204,326</b>	<b>6,610,592</b>	<b>2,734,398</b>	<b>100.0</b>	<b>6.6</b>
<b>Asia and the Pacific</b>	<b>4,995,633</b>	<b>4,023,412</b>	<b>1,317,337</b>	<b>102,193</b>	<b>5,442,942</b>	<b>2,194,333</b>	<b>82.3</b>	<b>9.0</b>
<b>ASEAN (Southeast Asia)</b>	<b>2,067,504</b>	<b>2,024,045</b>	<b>163,186</b>	<b>40,954</b>	<b>2,228,185</b>	<b>981,118</b>	<b>33.7</b>	<b>7.8</b>
Brunei Darussalam	790	1,046	27	58	1,131	503	0.0	43.2
Indonesia	55,753	38,530	26,410	1,864	66,804	20,189	1.0	19.8
Lao PDR	426,180	353,782	1,162	9,007	363,951	147,479	5.5	-14.6
Malaysia	201,116	175,693	23,675	3,640	203,008	63,713	3.1	0.9
Myanmar	22,518	16,864	6,279	1,271	24,414	10,366	0.4	8.4
Philippines	92,451	88,564	14,495	1,958	105,017	61,560	1.6	13.6
Singapore	86,251	80,681	5,796	2,087	88,564	28,380	1.3	2.7
Thailand	382,317	414,079	41,214	11,200	466,493	185,470	7.1	22.0
Vietnam	800,128	854,806	44,128	9,869	908,803	463,458	13.7	13.6
<b>Northeast Asia</b>	<b>2,684,908</b>	<b>1,796,139</b>	<b>1,134,307</b>	<b>36,162</b>	<b>2,966,608</b>	<b>1,119,652</b>	<b>44.9</b>	<b>10.5</b>
China	2,024,443	1,299,382	1,046,213	16,254	2,361,849	874,972	35.7	16.7
Hong Kong (China)	12,221	1,898	168	125	2,191	563	0.0	-82.1
Japan	210,471	170,613	31,109	5,914	207,636	82,117	3.1	-1.3
Korea (ROK)	301,770	221,153	24,176	9,545	254,874	106,838	3.9	-15.5
Macau (China)	640	141	45	33	219	51	0.0	-65.8
Mongolia	726	1,304	68	65	1,437	679	0.0	97.9
Taiwan (China)	134,637	101,648	32,528	4,226	138,402	54,432	2.1	2.8
<b>Southern Asia</b>	<b>81,620</b>	<b>85,272</b>	<b>11,298</b>	<b>1,483</b>	<b>98,053</b>	<b>25,808</b>	<b>1.5</b>	<b>20.1</b>
Afghanistan	276	302	41	36	379	112	0.0	37.3
Bangladesh	3,206	5,394	1,440	247	7,081	866	0.1	120.9
Bhutan	174	184	25	56	265	97	0.0	52.3
India	65,882	67,480	7,249	557	75,286	21,557	1.1	14.3
Iran	1,515	1,231	92	50	1,373	458	0.0	-9.4
Nepal	3,102	3,161	606	244	4,011	1,098	0.1	29.3
Pakistan	3,567	4,014	699	122	4,835	613	0.1	35.5
Sri Lanka	3,898	3,506	1,146	171	4,823	1,007	0.1	23.7
<b>Oceania</b>	<b>152,212</b>	<b>116,353</b>	<b>7,931</b>	<b>22,816</b>	<b>147,100</b>	<b>66,639</b>	<b>2.2</b>	<b>-3.4</b>
Australia	127,430	98,890	6,752	17,611	123,253	55,981	1.9	-3.3
Fiji	262	409	75	59	543	209	0.0	107.3
New Zealand	24,520	17,054	1,104	5,146	23,304	10,449	0.4	-5.0
Other Asia & the Pacific	9,389	1,603	615	778	2,996	1,116	0.0	-68.1
<b>Europe</b>	<b>818,661</b>	<b>720,440</b>	<b>34,502</b>	<b>38,995</b>	<b>793,937</b>	<b>363,839</b>	<b>12.0</b>	<b>-3.0</b>
<b>Northern Europe</b>	<b>219,964</b>	<b>202,542</b>	<b>10,624</b>	<b>3,179</b>	<b>216,345</b>	<b>92,963</b>	<b>3.3</b>	<b>-1.6</b>
Denmark	12,688	11,131	481	231	11,843	5,422	0.2	-6.7
Finland	7,375	5,499	379	167	6,045	2,643	0.1	-18.0
Iceland	761	776	59	50	885	380	0.0	16.3
Ireland	12,142	11,254	600	155	12,009	5,408	0.2	-1.1
Norway	9,463	7,795	263	248	8,306	3,748	0.1	-12.2
Sweden	15,140	12,791	759	530	14,080	5,837	0.2	-7.0
United Kingdom	162,395	153,296	8,083	1,798	163,177	69,525	2.5	0.5
<b>Western Europe</b>	<b>349,469</b>	<b>289,046</b>	<b>15,789</b>	<b>32,625</b>	<b>337,460</b>	<b>150,096</b>	<b>5.1</b>	<b>-3.4</b>
Austria	11,374	9,880	356	471	10,707	4,910	0.2	-5.9
Belgium	18,499	17,466	900	904	19,270	8,834	0.3	4.2
France	170,844	128,073	9,210	26,834	164,117	73,589	2.5	-3.9
Germany	98,976	89,488	2,799	2,084	94,371	41,148	1.4	-4.7
Luxembourg	690	817	69	45	931	399	0.0	34.9
Monaco	93	51	15	18	84	25	0.0	-9.7
Netherlands	28,911	26,063	1,459	762	28,284	12,578	0.4	-2.2
Switzerland	20,082	17,208	981	1,507	19,696	8,613	0.3	-1.9
<b>Central / Eastern Europe</b>	<b>125,989</b>	<b>108,402</b>	<b>4,092</b>	<b>1,582</b>	<b>114,076</b>	<b>60,400</b>	<b>1.7</b>	<b>-9.5</b>
Bulgaria	2,817	2,752	112	77	2,941	1,346	0.0	4.4
Czech Republic	7,000	6,821	158	94	7,073	3,176	0.1	1.0
Estonia	3,240	1,353	59	38	1,450	669	0.0	-55.2
Hungary	5,460	5,900	157	116	6,173	3,100	0.1	13.1
Kazakhstan	1,989	1,694	398	58	2,150	1,132	0.0	8.1
Kyrgyzstan	293	273	75	37	385	197	0.0	31.4
Latvia	1,495	1,248	78	29	1,355	711	0.0	-9.4
Lithuania	2,250	2,186	69	30	2,285	1,247	0.0	1.6
Poland	20,758	19,182	321	115	19,618	9,960	0.3	-5.5
Romania	3,866	3,423	159	119	3,701	1,954	0.1	-4.3
Russian Federation	64,726	53,307	1,688	658	55,653	30,754	0.8	-14.0
Slovakia	4,120	2,929	111	75	3,115	1,491	0.0	-24.4
Ukraine	7,424	6,815	581	80	7,476	4,337	0.1	0.7
Uzbekistan	551	519	126	56	701	326	0.0	27.2

Source: Tourism Statistics Department, MOT.

## International Tourist Arrivals to Cambodia by Country of Residence in January - December 2019

(by all means of transportation)

Regions Country of Residence	2018	2019			Total	Female	Share	Change
		Purposes of Visit					2019*	2019*/18
		Holiday	Business	Others			(%)	(%)
<b>Grand Total</b>	<b>6,201,077</b>	<b>5,034,903</b>	<b>1,371,363</b>	<b>204,326</b>	<b>6,610,592</b>	<b>2,734,398</b>	<b>100.0</b>	<b>6.6</b>
<b>Southern Europe</b>	<b>95,518</b>	<b>97,851</b>	<b>2,996</b>	<b>983</b>	<b>101,830</b>	<b>49,737</b>	<b>1.5</b>	<b>6.6</b>
Croatia	2,363	1,402	73	52	1,527	736	0.0	-35.4
Greece	1,924	2,060	81	66	2,207	998	0.0	14.7
Italy	33,979	39,034	1,472	410	40,916	19,147	0.6	20.4
Malta	439	464	20	23	507	206	0.0	15.5
Portugal	7,164	8,005	228	66	8,299	4,289	0.1	15.8
Serbia	1,249	1,085	66	51	1,202	617	0.0	-3.8
Slovenia	1,565	1,570	133	53	1,756	717	0.0	12.2
Spain	46,835	44,231	923	262	45,416	23,027	0.7	-3.0
<b>East Mediterranean Europe</b>	<b>22,154</b>	<b>21,896</b>	<b>791</b>	<b>423</b>	<b>23,110</b>	<b>10,195</b>	<b>0.3</b>	<b>4.3</b>
Israel	14,727	15,946	373	125	16,444	7,392	0.2	11.7
Turkey	7,427	5,950	418	298	6,666	2,803	0.1	-10.2
Other Europe	5,567	703	210	203	1,116	448	0.0	-80.0
<b>Americas</b>	<b>369,319</b>	<b>274,404</b>	<b>17,295</b>	<b>62,264</b>	<b>353,963</b>	<b>168,694</b>	<b>5.4</b>	<b>-4.2</b>
<b>North America</b>	<b>321,069</b>	<b>241,868</b>	<b>16,126</b>	<b>61,560</b>	<b>319,554</b>	<b>150,409</b>	<b>4.8</b>	<b>-0.5</b>
Canada	61,551	48,872	3,542	7,775	60,189	27,889	0.9	-2.2
Mexico	8,705	10,143	212	147	10,502	5,518	0.2	20.6
United States of America	250,813	182,853	12,372	53,638	248,863	117,002	3.8	-0.8
<b>Central America</b>	<b>1,945</b>	<b>1,075</b>	<b>90</b>	<b>68</b>	<b>1,233</b>	<b>595</b>	<b>0.0</b>	<b>-36.6</b>
Costa Rica	1,490	764	29	28	821	395	0.0	-44.9
Honduras	187	134	39	16	189	96	0.0	1.1
Jamaica	268	177	22	24	223	104	0.0	-16.8
<b>South America</b>	<b>43,799</b>	<b>31,043</b>	<b>959</b>	<b>525</b>	<b>32,527</b>	<b>17,435</b>	<b>0.5</b>	<b>-25.7</b>
Argentina	10,972	5,736	98	65	5,899	3,042	0.1	-46.2
Brazil	12,937	10,102	245	107	10,454	5,509	0.2	-19.2
Chile	7,838	6,211	323	77	6,611	3,535	0.1	-15.7
Colombia	7,605	4,127	123	102	4,352	2,385	0.1	-42.8
Ecuador	805	601	41	47	689	346	0.0	-14.4
Peru	1,939	1,720	42	61	1,823	1,113	0.0	-6.0
Uruguay	1,347	2,094	41	35	2,170	1,239	0.0	61.1
Venezuela	356	452	46	31	529	266	0.0	48.6
Other America	2,506	418	120	111	649	255	0.0	-74.1
<b>Africa</b>	<b>12,435</b>	<b>11,440</b>	<b>1,711</b>	<b>495</b>	<b>13,646</b>	<b>6,134</b>	<b>0.2</b>	<b>9.7</b>
<b>North Africa</b>	<b>1,394</b>	<b>1,880</b>	<b>109</b>	<b>91</b>	<b>2,080</b>	<b>939</b>	<b>0.0</b>	<b>49.2</b>
Morocco	868	914	51	28	993	436	0.0	14.4
Sudan	224	179	24	40	243	71	0.0	8.5
Tunisia	302	787	34	23	844	432	0.0	179.5
<b>Subsaharan Africa</b>	<b>10,529</b>	<b>9,404</b>	<b>1,548</b>	<b>355</b>	<b>11,307</b>	<b>5,103</b>	<b>0.2</b>	<b>7.4</b>
Cameroon	258	283	52	37	372	102	0.0	44.2
Congo	305	367	32	35	434	181	0.0	42.3
Ghana	502	301	54	30	385	84	0.0	-23.3
Kenya	485	454	55	52	561	303	0.0	15.7
Liberia	1,399	384	22	19	425	74	0.0	-69.6
Nigeria	535	228	309	58	595	92	0.0	11.2
South Africa	6,599	6,706	949	56	7,711	3,880	0.1	16.9
Tanzania	107	177	19	17	213	61	0.0	99.1
Uganda	166	346	30	36	412	206	0.0	148.2
Zimbabwe	173	158	26	15	199	120	0.0	15.0
Other Africa	512	156	54	49	259	92	0.0	-49.4
<b>Middle East</b>	<b>5,029</b>	<b>5,207</b>	<b>518</b>	<b>379</b>	<b>6,104</b>	<b>1,398</b>	<b>0.1</b>	<b>21.4</b>
Egypt	846	1,295	103	39	1,437	424	0.0	69.9
Iraq	577	391	63	96	550	96	0.0	-4.7
Jordan	495	566	85	26	677	133	0.0	36.8
Kuwait	472	370	51	45	466	84	0.0	-1.3
Oman	259	229	20	16	265	53	0.0	2.3
Palestine	193	82	18	14	114	18	0.0	-40.9
Qatar	117	71	20	20	111	18	0.0	-5.1
Saudi Arabia	321	437	26	30	493	90	0.0	53.6
Syria	480	447	32	20	499	87	0.0	4.0
United Arab Emirates	248	689	42	23	754	243	0.0	204.0
Yemen	653	528	27	21	576	98	0.0	-11.8
Other Middle East	368	102	31	29	162	54	0.0	-56.0