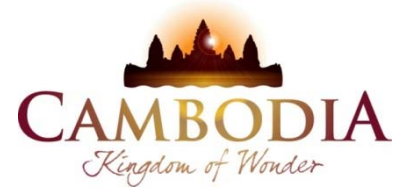




KINGDOM OF CAMBODIA
NATION RELIGION KING



TOURISM STATISTICS REPORT

December 2014

MINISTRY OF TOURISM

Statistics and Tourism Information Department

No. A3, Street 169, Sangkat Veal Vong, Khan 7 Makara, Phnom Penh, Cambodia.

Fax: +855 23 885003

E-mail: kong@mot.gov.kh

Web site: www.mot.gov.kh

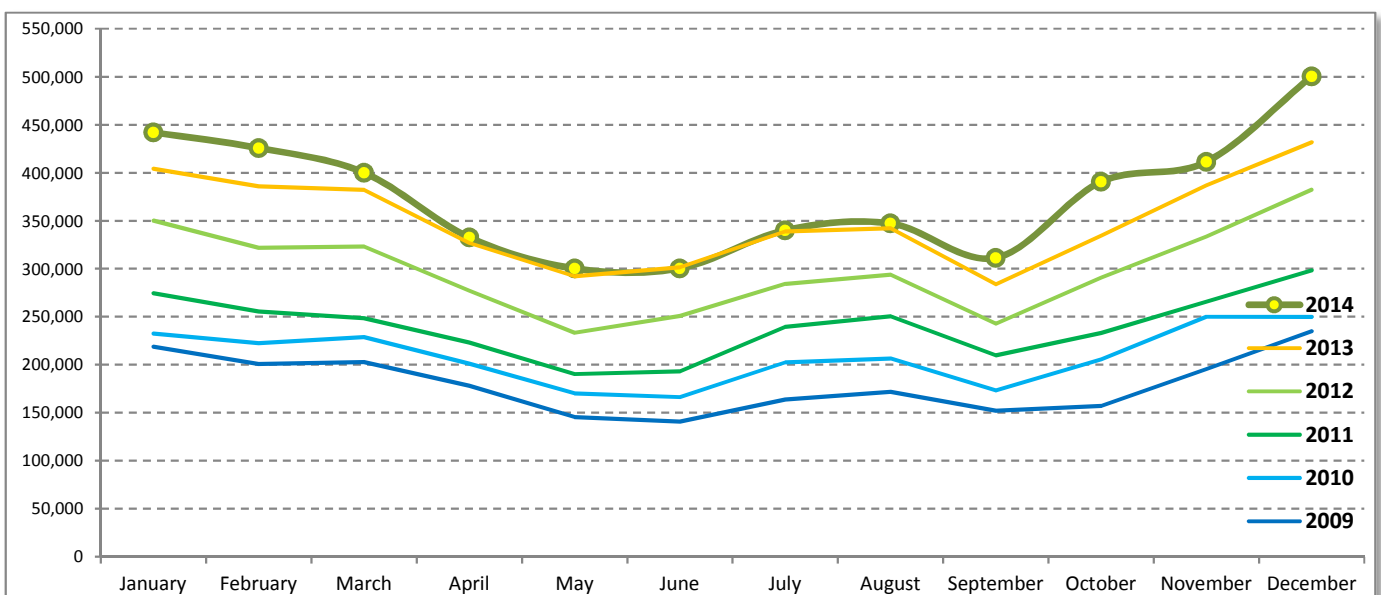
Tourism Highlights

International Tourist Arrivals, Average Length of Stay, Hotels Occupancy & Tourism Receipts 1993 - 2013

Years	Int'l Tourist Arrivals		Average Length of Stay (Days)	Hotels Occupancy (%)	Tourism Receipts (Million US\$)
	Number	Change (%)			
1993	118,183	-	N/A	N/A	N/A
1994	176,617	49.4	N/A	N/A	N/A
1995	219,680	24.4	8.00	37.00	100
1996	260,489	18.6	7.50	40.00	118
1997	218,843	-16.0	6.40	30.00	103
1998	286,524	30.9	5.20	40.00	166
1999	367,743	28.3	5.50	44.00	190
2000	466,365	26.8	5.50	45.00	228
2001	604,919	29.7	5.50	48.00	304
2002	786,524	30.0	5.80	50.00	379
2003	701,014	-10.9	5.50	50.00	347
2004	1,055,202	50.5	6.30	52.00	578
2005	1,421,615	34.7	6.30	52.00	832
2006	1,700,041	19.6	6.50	54.79	1,049
2007	2,015,128	18.5	6.50	54.79	1,400
2008	2,125,465	5.5	6.65	62.68	1,595
2009	2,161,577	1.7	6.45	63.57	1,561
2010	2,508,289	16.0	6.45	65.74	1,786
2011	2,881,862	14.9	6.50	66.15	1,912
2012	3,584,307	24.4	6.30	68.49	2,210
2013	4,210,165	17.5	6.75	69.53	2,547

International tourist arrivals to Cambodia

Destination	Months	2009	2010	2011	2012	2013	2014	change (%) 2014*/13
Cambodia	Q1	622,288	683,692	778,467	995,210	1,172,072	1,267,922	8.2
<i>International tourist arrivals by all means of transportations</i>	January	218,691	232,590	274,471	350,257	404,106	442,045	9.4
	February	200,789	222,354	255,499	321,870	385,760	425,801	10.4
	March	202,808	228,748	248,497	323,083	382,206	400,076	4.7
	Q2	464,230	537,464	606,562	761,442	920,527	933,446	1.4
	April	177,955	200,965	223,032	277,304	327,000	332,690	1.7
	May	145,564	170,164	190,258	233,220	292,115	300,302	2.8
	June	140,711	166,335	193,272	250,918	301,412	300,454	-0.3
	Q3	487,422	582,024	699,760	820,888	964,612	998,690	3.5
	July	163,817	202,349	239,527	284,282	338,761	340,091	0.4
	August	171,668	206,563	250,429	293,859	342,064	347,211	1.5
	September	151,937	173,112	209,804	242,747	283,787	311,388	9.7
	Q4	587,637	705,109	797,073	1,006,767	1,152,954	1,302,717	13.0
	October	157,105	205,515	233,190	290,959	334,410	390,637	16.8
	November	195,570	249,892	265,539	333,482	386,737	411,501	6.4
	December	234,962	249,702	298,344	382,326	431,807	500,579	15.9
	Total	2,161,577	2,508,289	2,881,862	3,584,307	4,210,165	4,502,775	7.0



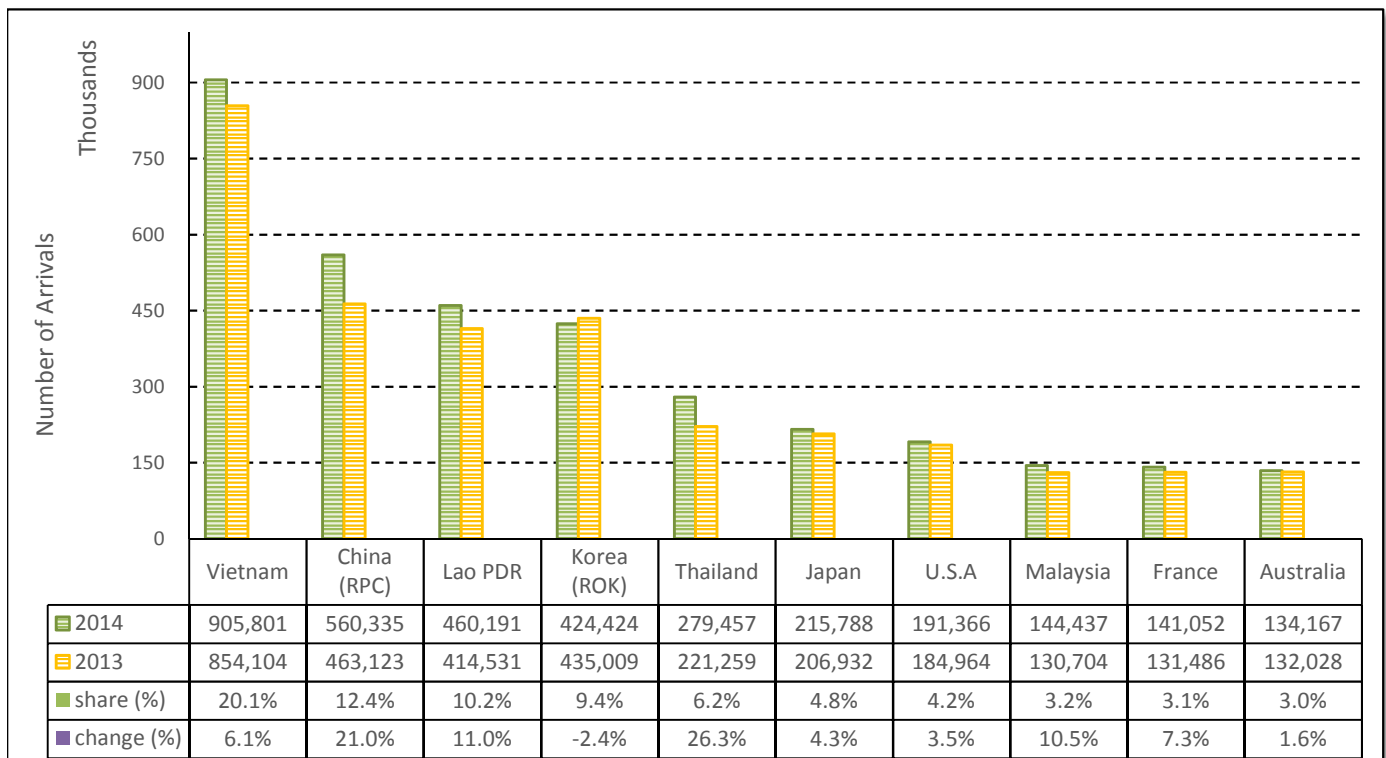
Source: Statistics and Tourism Information Department, MOT

I. INBOUND TOURISM

1. International tourist arrivals to Cambodia in January - December 2014

	Inbound tourism		share (%)		change (%)
	2013	2014	2013	2014	2014*/13
Air	2,017,658	2,273,493	47.9	50.5	12.7
Phnom Penh Int'l Airport (PNH)	836,377	917,800	19.9	20.4	9.7
Siem Reap Int'l Airport (REP)	1,181,281	1,355,693	28.1	30.1	14.8
Land and Water ways	2,192,507	2,229,282	52.1	49.5	1.7
Land	2,117,454	2,132,332	50.3	47.4	0.7
Waterway	75,053	96,950	1.8	2.2	29.2
Total	4,210,165	4,502,775	100.0	100.0	7.0

2. Top ten markets arrivals in January - December 2014



II. OUTBOUND TOURISM

Outbound tourism in January - December 2014

	Outbound tourism		change (%)
	2013	2014	2014*/13
Cambodian Outbound Tourists	871,646	955,909	9.7
International Tourists Departure	4,173,597	4,211,424	0.9

III. INTERNAL TOURISM

Foreign visitor arrivals to the regions in January - December 2014

	Arrivals		share (%)		change (%)
	2013	2014	2013	2014	2014*/13
Phnom Penh & Surrounding	1,972,879	2,151,838	41.2	41.9	9.1
Siem Reap Angkor	2,237,286	2,350,937	46.8	45.8	5.1
Coastal Areas	513,891	570,045	10.7	11.1	10.9
Eco-tourism Areas	60,501	60,031	1.3	1.2	-0.8
Total	4,784,557	5,132,851	100.0	100.0	7.3

International Tourist Arrivals to Cambodia by Country of Residence in January - December 2014

(by all mean of transportations)

Regions Country of Residence	2013	2014			Total	Female	share	change
		Purpose of Visit					(%)	(%)
		Holiday	Business	Other			2014*	2014*/13
GRAND TOTAL	4,210,165	4,255,231	205,667	41,877	4,502,775	1,985,746	100.0	7.0
Asia and the Pacific	3,231,892	3,301,596	167,999	29,190	3,498,785	1,546,358	77.7	8.3
ASEAN (South-East Asia)	1,831,507	1,918,130	53,439	20,328	1,991,897	876,513	44.2	8.8
Brunei Darussalam	814	894	21	75	990	419	0.0	21.6
Indonesia	28,199	29,103	6,236	316	35,655	9,932	0.8	26.4
Lao PDR	414,531	457,615	302	2,274	460,191	248,793	10.2	11.0
Malaysia	130,704	135,192	9,021	224	144,437	49,871	3.2	10.5
Myanmar	5,089	5,392	454	190	6,036	2,434	0.1	18.6
Philippines	118,999	84,894	7,866	715	93,475	51,002	2.1	-21.4
Singapore	57,808	62,554	3,076	225	65,855	23,247	1.5	13.9
Thailand	221,259	262,127	12,223	5,107	279,457	104,931	6.2	26.3
Vietnam	854,104	880,359	14,240	11,202	905,801	385,884	20.1	6.1
North-East Asia	1,211,004	1,200,737	101,917	5,627	1,308,281	587,851	29.1	8.0
China (RPC)	463,123	499,999	58,166	2,170	560,335	255,628	12.4	21.0
Hong Kong SAR	8,576	9,624	203	20	9,847	4,828	0.2	14.8
Japan	206,932	199,196	14,749	1,843	215,788	86,853	4.8	4.3
Korea (ROK)	435,009	407,179	15,699	1,546	424,424	201,381	9.4	-2.4
Mongolia	372	320	15	24	359	171	0.0	-3.5
Taiwan, China	96,992	84,419	13,085	24	97,528	38,990	2.2	0.6
Southern Asia	29,910	30,641	4,132	957	35,730	10,255	0.8	19.5
Afghanistan	273	188	12	14	214	52	0.0	-21.6
Bangladesh	1,611	1,520	293	184	1,997	276	0.0	24.0
Bhutan	101	80	4	26	110	40	0.0	8.9
India	23,610	25,306	2,767	456	28,529	8,869	0.6	20.8
Nepal	1,475	1,402	246	94	1,742	371	0.0	18.1
Pakistan	1,180	867	363	95	1,325	207	0.0	12.3
Srilanka	1,660	1,278	447	88	1,813	440	0.0	9.2
Western Asia	3,125	3,058	218	28	3,304	1,760	0.1	5.7
Kazakhstan	2,511	2,518	173	11	2,702	1,417	0.1	7.6
Uzbekistan	614	540	45	17	602	343	0.0	-2.0
Oceania	152,712	146,053	7,756	1,769	155,578	68,183	3.5	1.9
Australia	132,028	126,233	6,389	1,545	134,167	59,202	3.0	1.6
Fiji	107	121	18	13	152	46	0.0	42.1
New Zealand	20,577	19,699	1,349	211	21,259	8,935	0.5	3.3
Other Asia & the Pacific	3,634	2,977	537	481	3,995	1,796	0.1	9.9
Europe	698,157	677,621	24,340	6,744	708,705	310,345	15.7	1.5
Northern Europe	178,063	180,723	7,188	1,715	189,626	77,372	4.2	6.5
Denmark	10,485	11,287	329	150	11,766	4,868	0.3	12.2
Finland	6,731	6,826	300	106	7,232	2,772	0.2	7.4
Iceland	788	791	28	13	832	317	0.0	5.6
Ireland	10,245	9,234	244	64	9,542	4,081	0.2	-6.9
Norway	9,482	9,471	258	84	9,813	4,132	0.2	3.5
Sweden	16,413	16,476	476	183	17,135	6,612	0.4	4.4
United Kingdom	123,919	126,638	5,553	1,115	133,306	54,590	3.0	7.6
Western Europe	287,434	281,162	12,388	3,769	297,319	125,090	6.6	3.4
Austria	9,091	8,628	180	34	8,842	3,642	0.2	-2.7
Belgium	16,171	14,952	654	285	15,891	6,408	0.4	-1.7
France	131,486	131,069	7,790	2,193	141,052	59,872	3.1	7.3
Germany	81,565	81,173	2,188	782	84,143	35,118	1.9	3.2
Luxembourg	571	498	12	11	521	188	0.0	-8.8
Monaco	103	94	12	4	110	47	0.0	6.8
Netherlands	28,076	25,442	818	293	26,553	11,239	0.6	-5.4
Switzerland	20,371	19,306	734	167	20,207	8,576	0.4	-0.8
Central / Eastern Europe	165,452	142,379	2,361	384	145,124	75,026	3.2	-12.3
Bulgaria	961	1,117	13	21	1,151	607	0.0	19.8
Czech Republic	4,845	5,284	84	34	5,402	2,291	0.1	11.5
Estonia	1,366	1,786	54	15	1,855	754	0.0	35.8
Hungary	2,947	3,371	66	39	3,476	1,514	0.1	18.0
Lithuania	1,608	1,604	19	6	1,629	825	0.0	1.3
Poland	12,507	12,709	109	58	12,876	6,347	0.3	3.0
Romania	1,526	1,879	98	17	1,994	1,041	0.0	30.7
Russian Federation	131,675	106,753	1,695	153	108,601	57,599	2.4	-17.5
Slovakia	2,098	2,269	88	30	2,387	1,056	0.1	13.8
Ukraine	5,919	5,607	135	11	5,753	2,992	0.1	-2.8

Source: Statistics and Tourism Information Department, MOT

International Tourist Arrivals to Cambodia by Country of Residence in January - December 2014

(by all mean of transportations)

Regions Country of Residence	2013	2014			Total	Female	share	change
		Purpose of Visit					(%)	(%)
		Holiday	Business	Other			2014*	2014*/13
GRAND TOTAL	4,210,165	4,255,231	205,667	41,877	4,502,775	1,985,746	100.0	7.0
Southern Europe	64,093	70,973	1,939	586	73,498	31,552	1.6	14.7
Croatia	798	801	25	11	837	403	0.0	4.9
Greece	1,135	1,210	53	9	1,272	488	0.0	12.1
Italy	25,196	28,481	842	225	29,548	12,010	0.7	17.3
Portugal	4,087	4,503	113	22	4,638	1,971	0.1	13.5
Serbia	613	668	25	14	707	352	0.0	15.3
Slovenia	1,221	989	25	3	1,017	440	0.0	-16.7
Spain	26,372	30,016	482	180	30,678	14,327	0.7	16.3
Turkey	4,671	4,305	374	122	4,801	1,561	0.1	2.8
Other Europe	3,115	2,384	464	290	3,138	1,305	0.1	0.7
Americas	263,175	258,806	12,370	5,493	276,669	122,121	6.1	5.1
Argentina	5,763	5,649	48	40	5,737	2,803	0.1	-0.5
Brazil	6,860	9,723	129	64	9,916	4,836	0.2	44.5
Canada	50,867	49,568	2,234	462	52,264	23,204	1.2	2.7
Chile	3,969	5,101	138	31	5,270	2,603	0.1	32.8
Colombia	1,803	2,165	34	32	2,231	1,115	0.0	23.7
Costa Rica	305	403	8	9	420	184	0.0	37.7
Ecuador	283	344	18	10	372	186	0.0	31.4
Mexico	4,966	5,510	43	34	5,587	2,757	0.1	12.5
Peru	677	819	37	46	902	432	0.0	33.2
United States	184,964	177,208	9,538	4,620	191,366	82,805	4.2	3.5
Uruguay	618	729	4	6	739	362	0.0	19.6
Other Americas	2,100	1,587	139	139	1,865	834	0.0	-11.2
Africa	5,902	5,413	561	238	6,212	2,495	0.1	5.3
Cameroon	147	109	8	15	132	29	0.0	-10.2
Congo	58	40	7	12	59	19	0.0	1.7
Ghana	134	77	7	11	95	30	0.0	-29.1
Kenya	298	198	16	36	250	119	0.0	-16.1
Liberia	52	43	4	2	49	8	0.0	-5.8
Nigeria	605	384	226	34	644	60	0.0	6.4
Sudan	60	61	5	18	84	21	0.0	40.0
South Africa	4,043	4,109	223	42	4,374	1,988	0.1	8.2
Uganda	66	65	9	4	78	26	0.0	18.2
Other Africa	439	327	56	64	447	195	0.0	1.8
Middle East	11,039	11,795	397	212	12,404	4,427	0.3	12.4
Egypt	329	290	36	15	341	73	0.0	3.6
Iran	655	666	48	16	730	188	0.0	11.5
Iraq	134	98	4	4	106	26	0.0	-20.9
Israel	7,684	8,996	242	79	9,317	3,847	0.2	21.3
Kuwait	1,121	845	3	28	876	50	0.0	-21.9
Oman	199	157	1	2	160	22	0.0	-19.6
Palestine	94	68	4	1	73	17	0.0	-22.3
Qatar	95	55	8	4	67	17	0.0	-29.5
Saudi Arabia	150	150	11	3	164	23	0.0	9.3
United Arab Emirates	146	101	2	1	104	10	0.0	-28.8
Yemen	144	140	4	6	150	33	0.0	4.2
Other Middle East	288	229	34	53	316	121	0.0	9.7

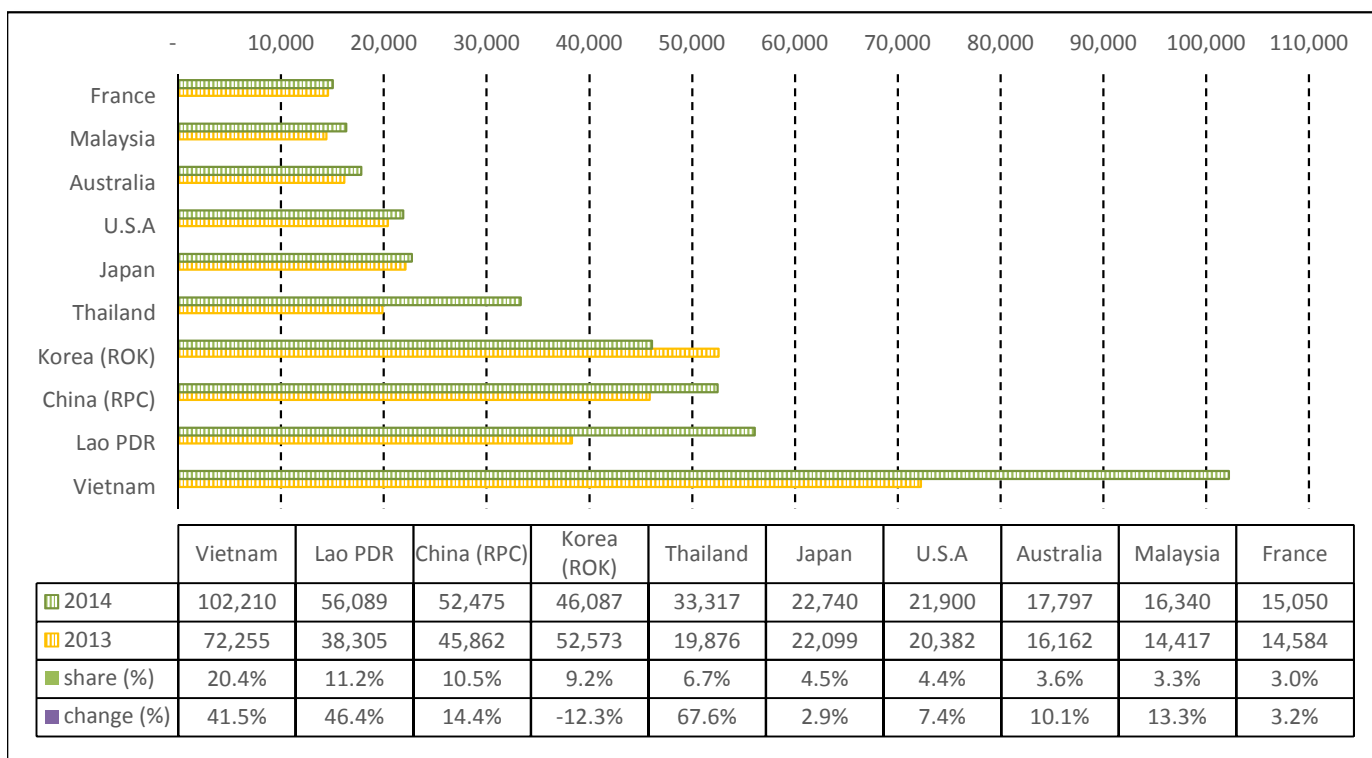
TOURISM STATISTICS REPORT IN DECEMBER 2014

I. INBOUND TOURISM

1. International tourist arrivals to Cambodia in December 2014

	Inbound tourism		share (%)		change (%)
	2013	2014	2013	2014	2014*/13
Air	226,962	245,616	52.6	49.1	8.2
Phnom Penh Int'l Airport (PNH)	86,328	92,195	20.0	18.4	6.8
Siem Reap Int'l Airport (REP)	140,634	153,421	32.6	30.6	9.1
Land and Water ways	204,845	254,963	47.4	50.9	24.5
Land	196,153	240,970	45.4	48.1	22.8
Waterway	8,692	13,993	2.0	2.8	61.0
Total	431,807	500,579	100.0	100.0	15.9

2. Top ten markets arrivals in December 2014



II. OUTBOUND TOURISM

Outbound tourism in December 2014

	Outbound tourism		change (%)
	2013	2014	2014*/13
Cambodian Outbound Tourists	72,309	79,837	10.4
International Tourists Departure	417,223	403,304	-3.3

III. INTERNAL TOURISM

Foreign visitor arrivals to the regions in December 2014

	Arrivals		share (%)		change (%)
	2013	2014	2013	2014	2014*/13
Phnom Penh & Surrounding	179,438	250,763	37.0	44.9	39.7
Siem Reap Angkor	252,369	249,816	52.1	44.8	-1.0
Coastal Areas	47,448	51,972	9.8	9.3	9.5
Eco-tourism Areas	5,431	5,541	1.1	1.0	2.0
Total	484,686	558,092	100.0	100.0	15.1

International Tourist Arrivals to Cambodia by Country of Residence in December 2014

(by all mean of transportations)

Regions Country of Residence	2013	2014			Total	Female	share	change
		Purpose of Visit					(%)	(%)
		Holiday	Business	Other			2014*	2014*/13
GRAND TOTAL	431,807	477,829	18,203	4,547	500,579	197,008	100.0	15.9
Asia and the Pacific	320,538	369,834	15,220	3,196	388,250	148,096	77.6	21.1
ASEAN (South-East Asia)	166,216	222,376	5,607	2,270	230,253	77,379	46.0	38.5
Brunei Darussalam	174	130	2	12	144	62	0.0	-17.2
Indonesia	2,804	2,796	748	28	3,572	1,064	0.7	27.4
Lao PDR	38,305	55,926	21	142	56,089	22,760	11.2	46.4
Malaysia	14,417	15,582	739	19	16,340	6,706	3.3	13.3
Myanmar	427	635	34	12	681	278	0.1	59.5
Philippines	10,198	9,316	659	30	10,005	3,218	2.0	-1.9
Singapore	7,760	7,624	249	22	7,895	3,258	1.6	1.7
Thailand	19,876	31,493	957	867	33,317	12,284	6.7	67.6
Vietnam	72,255	98,874	2,198	1,138	102,210	27,749	20.4	41.5
North-East Asia	131,095	123,065	8,610	602	132,277	59,319	26.4	0.9
China (RPC)	45,862	47,290	4,907	278	52,475	24,489	10.5	14.4
Hong Kong SAR	1,502	1,948	9	4	1,961	983	0.4	30.6
Japan	22,099	21,300	1,292	148	22,740	9,641	4.5	2.9
Korea (ROK)	52,573	44,671	1,249	167	46,087	20,646	9.2	-12.3
Mongolia	21	29	1	1	31	16	0.0	47.6
Taiwan, China	9,038	7,827	1,152	4	8,983	3,544	1.8	-0.6
Southern Asia	3,408	3,629	315	73	4,017	1,363	0.8	17.9
Afghanistan	7	6	1	1	8	1	0.0	14.3
Bangladesh	77	82	19	10	111	17	0.0	44.2
Bhutan	17	9	1	7	17	6	0.0	0.0
India	2,912	3,129	215	29	3,373	1,215	0.7	15.8
Nepal	127	140	27	11	178	40	0.0	40.2
Pakistan	117	126	32	10	168	23	0.0	43.6
Srilanka	151	137	20	5	162	61	0.0	7.3
Western Asia	372	299	13	5	317	167	0.1	-14.8
Kazakhstan	293	236	9	3	248	125	0.0	-15.4
Uzbekistan	79	63	4	2	69	42	0.0	-12.7
Oceania	19,219	20,229	590	139	20,958	9,672	4.2	9.0
Australia	16,162	17,190	479	128	17,797	8,227	3.6	10.1
Fiji	12	16	1	2	19	6	0.0	58.3
New Zealand	3,045	3,023	110	9	3,142	1,439	0.6	3.2
Other Asia & the Pacific	228	236	85	107	428	196	0.1	87.7
Europe	80,703	75,499	1,929	714	78,142	33,538	15.6	-3.2
Northern Europe	18,542	20,642	538	159	21,339	8,440	4.3	15.1
Denmark	1,106	1,042	20	20	1,082	425	0.2	-2.2
Finland	1,036	1,249	36	6	1,291	527	0.3	24.6
Iceland	36	85	2	1	88	23	0.0	144.4
Ireland	953	770	23	2	795	307	0.2	-16.6
Norway	1,021	1,026	25	27	1,078	431	0.2	5.6
Sweden	2,489	2,658	30	22	2,710	1,011	0.5	8.9
United Kingdom	11,901	13,812	402	81	14,295	5,716	2.9	20.1
Western Europe	33,132	32,441	949	363	33,753	14,117	6.7	1.9
Austria	1,053	1,097	17	1	1,115	440	0.2	5.9
Belgium	1,941	1,548	47	39	1,634	666	0.3	-15.8
France	14,584	14,315	538	197	15,050	6,526	3.0	3.2
Germany	9,725	9,754	209	81	10,044	4,083	2.0	3.3
Luxembourg	82	77	2	5	84	28	0.0	2.4
Monaco	0	11	1	2	14	8	0.0	
Netherlands	3,013	2,840	72	22	2,934	1,181	0.6	-2.6
Switzerland	2,734	2,799	63	16	2,878	1,185	0.6	5.3
Central / Eastern Europe	22,598	14,756	220	53	15,029	7,695	3.0	-33.5
Bulgaria	133	180	4	3	187	110	0.0	40.6
Czech Republic	583	674	2	4	680	293	0.1	16.6
Estonia	232	222	2	1	225	89	0.0	-3.0
Hungary	290	533	3	17	553	255	0.1	90.7
Lithuania	159	189	3	4	196	101	0.0	23.3
Poland	1,240	1,748	19	4	1,771	881	0.4	42.8
Romania	244	307	6	3	316	191	0.1	29.5
Russian Federation	18,668	10,076	148	15	10,239	5,285	2.0	-45.2
Slovakia	159	219	12	1	232	106	0.0	45.9
Ukraine	890	608	21	1	630	384	0.1	-29.2

Source: Statistics and Tourism Information Department, MOT

International Tourist Arrivals to Cambodia by Country of Residence in December 2014

(by all mean of transportations)

Regions Country of Residence	2013		2014			share		change
		Purpose of Visit			Total	Female	(%)	(%)
		Holiday	Business	Other			2014*	2014*/13
GRAND TOTAL	431,807	477,829	18,203	4,547	500,579	197,008	100.0	15.9
Southern Europe	6,211	7,442	146	87	7,675	3,159	1.5	23.6
Croatia	143	155	3	3	161	96	0.0	12.6
Greece	163	187	4	2	193	94	0.0	18.4
Italy	2,922	3,530	79	21	3,630	1,525	0.7	24.2
Portugal	434	661	6	2	669	191	0.1	54.1
Serbia	73	70	2	11	83	59	0.0	13.7
Slovenia	181	167	6	3	176	77	0.0	-2.8
Spain	1,869	2,182	17	18	2,217	928	0.4	18.6
Turkey	426	490	29	27	546	189	0.1	28.2
Other Europe	220	218	76	52	346	127	0.1	57.3
Americas	28,499	30,027	934	557	31,518	14,279	6.3	10.6
Argentina	466	342	8	5	355	153	0.1	-23.8
Brazil	848	1,386	7	20	1,413	661	0.3	66.6
Canada	5,326	5,729	196	51	5,976	2,625	1.2	12.2
Chile	294	355	11	11	377	157	0.1	28.2
Colombia	238	257	3	6	266	135	0.1	11.8
Costa Rica	20	58	2	4	64	22	0.0	220.0
Ecuador	58	55	1	2	58	32	0.0	0.0
Mexico	639	752	3	6	761	378	0.2	19.1
Peru	59	87	1	31	119	57	0.0	101.7
United States	20,382	20,844	675	381	21,900	9,956	4.4	7.4
Uruguay	14	17	1	2	20	6	0.0	42.9
Other Americas	155	145	26	38	209	97	0.0	34.8
Africa	901	1,021	65	36	1,122	521	0.2	24.5
Cameroon	18	6	1	2	9	3	0.0	-50.0
Congo	6	7	3	2	12	7	0.0	100.0
Ghana	6	5	1	2	8	1	0.0	33.3
Kenya	48	26	2	2	30	15	0.0	-37.5
Liberia	8	15	1	1	17	3	0.0	112.5
Nigeria	31	30	21	3	54	9	0.0	74.2
Sudan	4	11	1	1	13	2	0.0	225.0
South Africa	736	875	23	7	905	454	0.2	23.0
Uganda	5	10	2	1	13	5	0.0	160.0
Other Africa	39	36	10	15	61	22	0.0	56.4
Middle East	1,166	1,448	55	44	1,547	574	0.3	32.7
Egypt	28	41	1	2	44	7	0.0	57.1
Iran	56	123	11	1	135	36	0.0	141.1
Iraq	6	5	1	1	7	2	0.0	16.7
Israel	928	1,145	26	19	1,190	497	0.2	28.2
Kuwait	70	37	1	2	40	2	0.0	-42.9
Oman	11	19	1	1	21	4	0.0	90.9
Palestine	4	8	2	1	11	3	0.0	175.0
Qatar	4	5	1	2	8	2	0.0	100.0
Saudi Arabia	12	10	2	1	13	3	0.0	8.3
United Arab Emirates	8	11	1	1	13	4	0.0	62.5
Yemen	13	16	1	2	19	2	0.0	46.2
Other Middle East	26	28	7	11	46	12	0.0	76.9

COMPILED BY:

1. Mr. Kong Sopheareak

Director
Statistics & Tourism Information Department
Fax: +855 23 885003
E-mail: kong@mot.gov.kh

2. Mr. Horth Vanny

Chief of Tourism Statistics Office
Compile and data analysis
Tel.: +855 12 827664