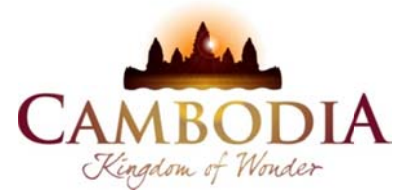




KINGDOM OF CAMBODIA  
NATION RELIGION KING



# TOURISM STATISTICS REPORT

in

2011

**MINISTRY OF TOURISM**

Statistics and Tourism Information Department

No. A3, Street 169, Sangkat Veal Vong, Khan 7 Makara, Phnom Penh, Cambodia.

Fax: +855 23 885003

E-mail: [kong@mot.gov.kh](mailto:kong@mot.gov.kh)

Web site: [www.mot.gov.kh](http://www.mot.gov.kh)

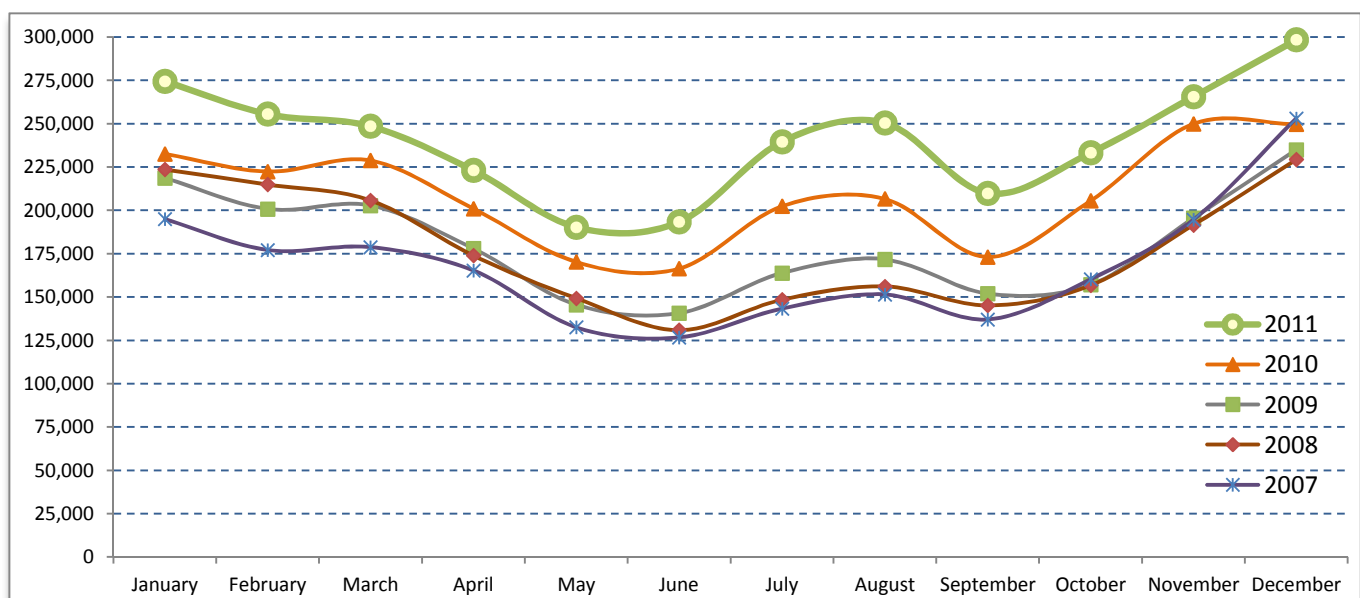
## Tourism Highlights

### International Tourist Arrivals, Average Length of Stay, Hotels Occupancy & Tourism Receipts 1993 - 2011

Years	Tourist Arrivals		Average Length of Stay (days)	Hotels Occupancy (%)	Tourism Receipts (million US\$)
	number	change (%)			
1993	118,183	-	N/A	N/A	N/A
1994	176,617	49.4%	N/A	N/A	N/A
1995	219,680	24.4%	8.00	37.00	100
1996	260,489	18.6%	7.50	40.00	118
1997	218,843	-16.0%	6.40	30.00	103
1998	286,524	30.9%	5.20	40.00	166
1999	367,743	28.3%	5.50	44.00	190
2000	466,365	26.8%	5.50	45.00	228
2001	604,919	29.7%	5.50	48.00	304
2002	786,524	30.0%	5.80	50.00	379
2003	701,014	-10.9%	5.50	50.00	347
2004	1,055,202	50.5%	6.30	52.00	578
2005	1,421,615	34.7%	6.30	52.00	832
2006	1,700,041	19.6%	6.50	54.79	1,049
2007	2,015,128	18.5%	6.50	54.79	1,400
2008	2,125,465	5.5%	6.65	62.68	1,595
2009	2,161,577	1.7%	6.45	63.57	1,561
2010	2,508,289	16.0%	6.45	65.74	1,786
2011	2,881,862	14.9%	6.50	66.15	1,912

### International tourist arrivals to Cambodia

Destination	Months	2007	2008	2009	2010	2011	change (%) 2011*/10
<b>Cambodia</b>	<b>Q1</b>	<b>550,813</b>	<b>644,205</b>	<b>622,288</b>	<b>683,692</b>	<b>778,467</b>	<b>13.9</b>
<i>International tourist arrivals</i>	January	194,932	223,581	218,691	232,590	274,471	18.0
<i>by all means of</i>	February	177,130	214,902	200,789	222,354	255,499	14.9
<i>transportations</i>	March	178,751	205,722	202,808	228,748	248,497	8.6
	<b>Q2</b>	<b>424,536</b>	<b>454,031</b>	<b>464,230</b>	<b>537,464</b>	<b>606,562</b>	<b>12.9</b>
	April	165,347	173,903	177,955	200,965	223,032	11.0
	May	132,512	149,275	145,564	170,164	190,258	11.8
	June	126,677	130,853	140,711	166,335	193,272	16.2
	<b>Q3</b>	<b>431,815</b>	<b>449,693</b>	<b>487,422</b>	<b>582,024</b>	<b>699,760</b>	<b>20.2</b>
	July	143,310	148,449	163,817	202,349	239,527	18.4
	August	151,478	156,098	171,668	206,563	250,429	21.2
	September	137,027	145,146	151,937	173,112	209,804	21.2
	<b>Q4</b>	<b>607,964</b>	<b>577,536</b>	<b>587,637</b>	<b>705,109</b>	<b>797,073</b>	<b>13.0</b>
	October	160,235	156,718	157,105	205,515	233,190	13.5
	November	194,646	191,549	195,570	249,892	265,539	6.3
	December	253,083	229,269	234,962	249,702	298,344	19.5
	<b>Total</b>	<b>2,015,128</b>	<b>2,125,465</b>	<b>2,161,577</b>	<b>2,508,289</b>	<b>2,881,862</b>	<b>14.9</b>



Source: Statistics and ICT Department, MOT

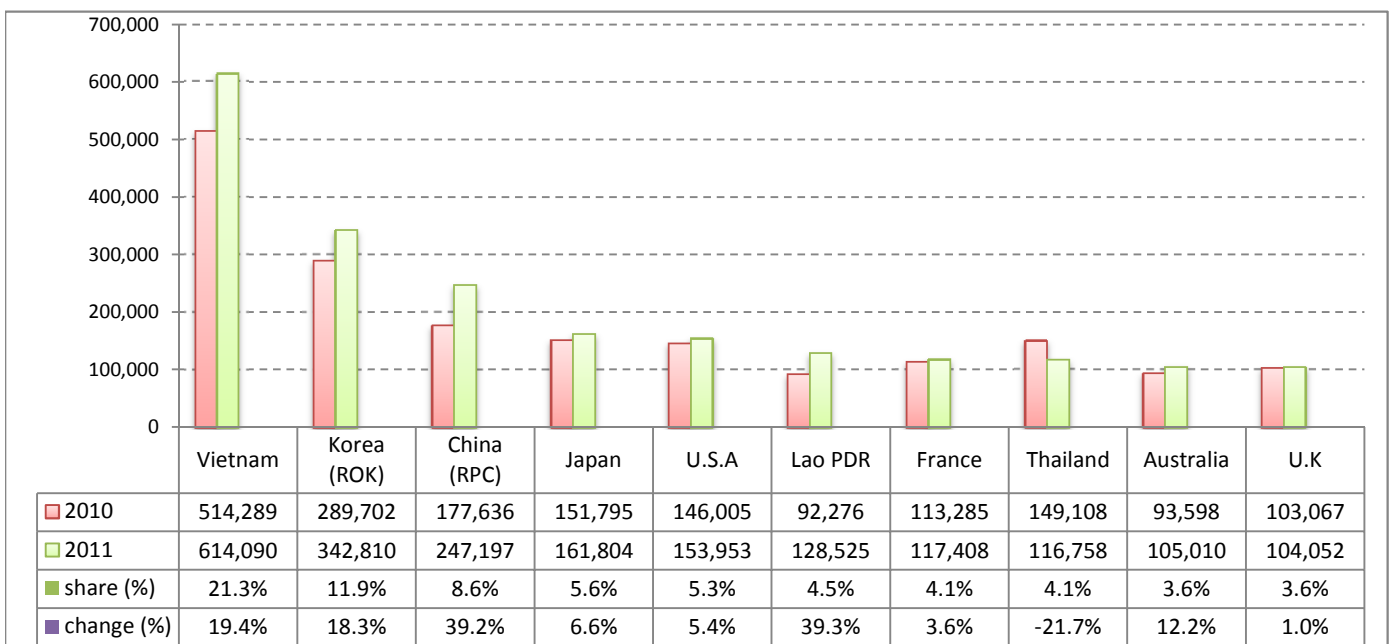
## Executive Summary Report in the 2011

I. International tourist arrivals to Cambodia in January - December was: **2,881,862**

### II. Mode of arrivals

	visitors	share (%)
<b>Air</b>	<b>1,480,407</b>	<b>51.4</b>
Phnom Penh Int'l Airport	645,235	22.4
Siem Reap Int'l Airport	835,172	29.0
<b>Land and Water ways</b>	<b>1,401,455</b>	<b>48.6</b>
Land	1,320,311	45.8
Water ways	81,144	2.8
<b>Total</b>	<b>2,881,862</b>	<b>100.0</b>

### III. Top ten markets arrivals in January - December 2011



### IV. International tourist arrivals to Cambodia in January - December 2011

	Inbound		share (%)		change (%)
	2010	2011	2010	2011	2011*/10
<b>Air</b>	<b>1,304,300</b>	<b>1,480,407</b>	<b>52.0</b>	<b>51.4</b>	<b>13.5</b>
Phnom Penh Int'l Airport	591,628	645,235	23.6	22.4	9.1
Siem Reap Int'l Airport	712,672	835,172	28.4	29.0	17.2
<b>Land and Water ways</b>	<b>1,203,989</b>	<b>1,401,455</b>	<b>48.0</b>	<b>48.6</b>	<b>16.4</b>
Land	1,125,974	1,320,311	44.9	45.8	17.3
Water ways	78,015	81,144	3.1	2.8	4.0
<b>Total</b>	<b>2,508,289</b>	<b>2,881,862</b>	<b>100.0</b>	<b>100.0</b>	<b>14.9</b>

### V. Remark: Percentage share of international tourist arrivals at destinations in January - December 2011

	Arrivals		share (%)		change (%)
	2010	2011	2010	2011	2011*/10
Phnom Penh & Other Destinations	1,203,033	1,271,786	48.0	44.1	5.7
Siem Reap Province	1,305,256	1,610,076	52.0	55.9	23.4
<b>Total</b>	<b>2,508,289</b>	<b>2,881,862</b>	<b>100.0</b>	<b>100.0</b>	<b>14.9</b>

### VI. Outbound tourists departures in January - December 2011

	Outbound		change (%)
	2010	2011	2011*/10
Cambodian outbound tourists	504,990	709,616	40.5
International outbound tourists	2,354,832	2,847,309	20.9

## International Tourist Arrivals to Cambodia by Country of Residence in January - December 2011

(by all mean of transportations)

Regions Country of Residence	2010	2011			Total	Female	share	change
		Purpose of Visit					(%)	(%)
		Tourists	Business	Other			2011*	2011*/10
<b>GRAND TOTAL</b>	<b>2,508,289</b>	<b>2,706,743</b>	<b>143,385</b>	<b>31,734</b>	<b>2,881,862</b>	<b>1,303,117</b>	<b>100.0</b>	<b>14.9</b>
<b>Asia and the Pacific</b>	<b>1,807,398</b>	<b>1,975,951</b>	<b>114,055</b>	<b>16,595</b>	<b>2,106,601</b>	<b>976,944</b>	<b>73.1</b>	<b>16.6</b>
<b>ASEAN</b>	<b>962,570</b>	<b>1,060,394</b>	<b>33,054</b>	<b>7,663</b>	<b>1,101,111</b>	<b>504,656</b>	<b>38.2</b>	<b>14.4</b>
Brunei Darussalam	460	360	17	104	481	203	0.0	4.6
Indonesia	12,636	12,378	2,887	552	15,817	6,046	0.5	25.2
Lao PDR	92,276	127,772	135	618	128,525	87,976	4.5	39.3
Malaysia	89,952	96,554	6,100	275	102,929	36,803	3.6	14.4
Myanmar	2,614	3,589	466	144	4,199	1,755	0.1	60.6
Philippines	56,156	64,269	5,359	1,090	70,718	42,740	2.5	25.9
Singapore	45,079	45,378	2,008	208	47,594	18,226	1.7	5.6
Thailand	149,108	105,671	9,325	1,762	116,758	41,738	4.1	-21.7
Vietnam	514,289	604,423	6,757	2,910	614,090	269,169	21.3	19.4
<b>Eastern Asia</b>	<b>715,045</b>	<b>778,361</b>	<b>71,581</b>	<b>5,755</b>	<b>855,697</b>	<b>411,173</b>	<b>29.7</b>	<b>19.7</b>
China (RPC)	177,636	203,399	42,100	1,698	247,197	113,482	8.6	39.2
Hong Kong SAR	4,378	4,986	271	9	5,266	2,450	0.2	20.3
Japan	151,795	153,682	6,051	2,071	161,804	76,766	5.6	6.6
Korea (ROK)	289,702	327,294	13,608	1,908	342,810	173,146	11.9	18.3
Mongolia	305	207	13	37	257	131	0.0	-15.7
Taiwan, China	91,229	88,793	9,538	32	98,363	45,198	3.4	7.8
<b>Southern Asia</b>	<b>18,584</b>	<b>15,913</b>	<b>3,268</b>	<b>935</b>	<b>20,116</b>	<b>5,300</b>	<b>0.7</b>	<b>8.2</b>
Afghanistan	180	77	8	28	113	18	0.0	-37.2
Bangladesh	1,658	975	215	126	1,316	142	0.0	-20.6
Bhutan		48	7	26	81	26	0.0	
India	13,542	12,601	2,188	451	15,240	4,397	0.5	12.5
Nepal	1,081	826	218	112	1,156	257	0.0	6.9
Pakistan	1,092	622	392	99	1,113	212	0.0	1.9
Srilanka	1,031	764	240	93	1,097	248	0.0	6.4
<b>Western Asia</b>	<b>0</b>	<b>1,785</b>	<b>144</b>	<b>16</b>	<b>1,945</b>	<b>1,089</b>	<b>0.1</b>	
Kazakhstan		1,097	115	12	1,224	578	0.0	
Uzbekistan		688	29	4	721	511	0.0	
<b>Oceania</b>	<b>107,306</b>	<b>113,724</b>	<b>5,860</b>	<b>2,018</b>	<b>121,602</b>	<b>53,307</b>	<b>4.2</b>	<b>13.3</b>
Australia	93,598	98,254	4,963	1,793	105,010	46,592	3.6	12.2
Fiji		79	26	12	117	39	0.0	
New Zealand	13,708	15,391	871	213	16,475	6,676	0.6	20.2
Other Asia & the Pacific	3,893	5,774	148	208	6,130	1,419	0.2	57.5
<b>Europe</b>	<b>489,400</b>	<b>515,600</b>	<b>18,591</b>	<b>8,672</b>	<b>542,863</b>	<b>228,053</b>	<b>18.8</b>	<b>10.9</b>
<b>Northern Europe</b>	<b>145,767</b>	<b>143,372</b>	<b>6,098</b>	<b>2,130</b>	<b>151,600</b>	<b>58,327</b>	<b>5.3</b>	<b>4.0</b>
Denmark	7,810	8,903	326	123	9,352	3,816	0.3	19.7
Finland	5,244	5,996	229	185	6,410	2,431	0.2	22.2
Iceland	229	342	10	3	355	121	0.0	55.0
Ireland	8,567	8,142	282	117	8,541	3,420	0.3	-0.3
Norway	7,774	7,714	304	110	8,128	3,297	0.3	4.6
Sweden	13,076	14,061	491	210	14,762	5,688	0.5	12.9
United Kingdom	103,067	98,214	4,456	1,382	104,052	39,554	3.6	1.0
<b>Western Europe</b>	<b>238,812</b>	<b>226,787</b>	<b>9,985</b>	<b>5,239</b>	<b>242,011</b>	<b>98,261</b>	<b>8.4</b>	<b>1.3</b>
Austria	8,547	7,337	173	91	7,601	2,994	0.3	-11.1
Belgium	14,295	13,095	488	322	13,905	5,527	0.5	-2.7
France	113,285	107,957	6,383	3,068	117,408	49,485	4.1	3.6
Germany	62,864	60,597	1,651	1,150	63,398	24,630	2.2	0.8
Luxembourg	639	470	9	18	497	201	0.0	-22.2
Monaco		79	0	3	82	39	0.0	
Netherlands	23,537	21,667	685	373	22,725	8,882	0.8	-3.4
Switzerland	15,645	15,585	596	214	16,395	6,503	0.6	4.8
<b>Eastern Europe</b>	<b>54,401</b>	<b>90,073</b>	<b>1,151</b>	<b>369</b>	<b>91,593</b>	<b>48,210</b>	<b>3.2</b>	<b>68.4</b>
Bulgaria	445	442	11	17	470	226	0.0	5.6
Czech Republic	3,113	3,251	41	18	3,310	1,436	0.1	6.3
Estonia		911	24	19	954	379	0.0	
Hungary	2,740	2,510	58	17	2,585	1,194	0.1	-5.7
Lithuania		1,226	11	1	1,238	661	0.0	
Poland	8,712	9,036	54	61	9,151	4,633	0.3	5.0
Romania	1,171	1,055	19	7	1,081	568	0.0	-7.7
Russian Federation	34,170	66,791	781	175	67,747	36,577	2.4	98.3
Slovakia	1,286	1,205	29	35	1,269	522	0.0	-1.3
Ukraine	2,764	3,646	123	19	3,788	2,014	0.1	37.0

## International Tourist Arrivals to Cambodia by Country of Residence in January - December 2011

(by all mean of transportations)

Regions Country of Residence	2010		2011			share		change	
			Purpose of Visit			Total	Female	(%)	(%)
			Tourists	Business	Other			2011*	2011*/10
<b>GRAND TOTAL</b>	<b>2,508,289</b>	<b>2,706,743</b>	<b>143,385</b>	<b>31,734</b>	<b>2,881,862</b>	<b>1,303,117</b>	<b>100.0</b>	<b>14.9</b>	
<b>Southern Europe</b>	<b>47,134</b>	<b>50,281</b>	<b>1,253</b>	<b>774</b>	<b>52,308</b>	<b>22,149</b>	<b>1.8</b>	<b>11.0</b>	
Croatia	470	496	25	11	532	209	0.0	13.2	
Greece	1,395	1,120	35	13	1,168	441	0.0	-16.3	
Italy	19,808	20,017	555	265	20,837	7,982	0.7	5.2	
Portugal	2,554	2,991	56	34	3,081	1,479	0.1	20.6	
Serbia		378	12	18	408	171	0.0		
Slovenia	692	841	22	11	874	374	0.0	26.3	
Spain	19,163	21,513	337	273	22,123	10,444	0.8	15.4	
Turkey	3,052	2,925	211	149	3,285	1,049	0.1	7.6	
Other Europe	3,286	5,087	104	160	5,351	1,106	0.2	62.8	
<b>Americas</b>	<b>199,089</b>	<b>201,438</b>	<b>9,976</b>	<b>6,086</b>	<b>217,500</b>	<b>93,063</b>	<b>7.5</b>	<b>9.2</b>	
Argentina	2,212	5,139	37	47	5,223	2,636	0.2	136.1	
Brazil	2,490	3,526	36	54	3,616	1,743	0.1	45.2	
Canada	38,718	40,029	1,862	571	42,462	18,592	1.5	9.7	
Chile	2,240	2,494	108	31	2,633	1,212	0.1	17.5	
Colombia	1,060	1,993	41	26	2,060	1,015	0.1	94.3	
Costa Rica		182	12	7	201	112	0.0		
Ecuador		160	18	6	184	94	0.0		
Mexico	3,157	3,393	62	31	3,486	1,685	0.1	10.4	
Peru	468	451	13	19	483	218	0.0	3.2	
United States	146,005	141,085	7,707	5,161	153,953	64,599	5.3	5.4	
Uruguay	333	501	3	8	512	283	0.0	53.8	
Other Americas	2,406	2,485	77	125	2,687	874	0.1	11.7	
<b>Africa</b>	<b>4,627</b>	<b>5,253</b>	<b>510</b>	<b>230</b>	<b>5,993</b>	<b>2,126</b>	<b>0.2</b>	<b>29.5</b>	
Cameroon	493	369	7	12	388	76	0.0	-21.3	
Congo		150	1	6	157	35	0.0		
Ghana	503	375	20	20	415	55	0.0	-17.5	
Kenya		225	11	47	283	131	0.0		
Liberia		332	3	0	335	66	0.0		
Nigeria	769	247	258	23	528	74	0.0	-31.3	
Sudan	37	34	2	12	48	15	0.0	29.7	
South Africa	2,459	2,988	189	39	3,216	1,336	0.1	30.8	
Uganda		279	3	17	299	208	0.0		
Other Africa	366	254	16	54	324	130	0.0	-11.5	
<b>Middle East</b>	<b>7,775</b>	<b>8,501</b>	<b>253</b>	<b>151</b>	<b>8,905</b>	<b>2,931</b>	<b>0.3</b>	<b>14.5</b>	
Egypt	220	159	11	26	196	37	0.0	-10.9	
Iran	518	676	16	4	696	107	0.0	34.4	
Iraq		70	3	18	91	21	0.0		
Israel	6,186	6,401	202	41	6,644	2,595	0.2	7.4	
Kuwait	543	529	0	1	530	13	0.0	-2.4	
Oman		102	0	5	107	10	0.0		
Palestine		31	3	0	34	3	0.0		
Qatar		61	1	0	62	23	0.0		
Saudi Arabia	64	66	6	6	78	20	0.0	21.9	
United Arab Emirates		150	0	5	155	17	0.0		
Yemen		84	6	8	98	13	0.0		
Other Middle East	244	172	5	37	214	72	0.0	-12.3	

### Remark:

- Cambodian Overseas:	79,261
- Cambodian Residence:	664,081
- Cambodian outbound tourist departures:	709,616
- International outbound tourist departures:	2,847,309

**COMPILED BY:**

1. Mr. Kong Sopheareak

Director  
Statistics & Tourism Information Department  
Fax: +855 23 885003  
E-mail: kong@mot.gov.kh

2. Mr. Horth Vanny

Chief of Tourism Statistics Office  
Compile and data analysis  
Tel.: +855 12 827664